



3D Titanium Pedicle Screw WhitePaper



THE ONLY 510(k) FDA 3D TITANIUM PEDICLE SCREW
APPROVED IN THE WORLD



Eminent Spine



3D printed Pedicle Screw Whitepaper

Age: Male Female

Diagnosis:

Risk Factors & Co-Morbidities

Height:		
Weight/BMI	Smoker	Diabetes/A1C
Osteopenia	Osteoporosis	Previous spinal fusion
Pre-operative TLK greater than 10°		
Lateral subluxation greater than 8mm		SVA imbalance

OR

Levels:	Cannulated or Non-Cannulated
Rod Length:	
Pedicle screw sizes:	

Follow-Up: AP & Lat x-rays

Pre-Op	3 months	6 Months
2 or 6 weeks		

Complications

Screw Loosing	Infections	None
Screw Fracture	Revision	Other

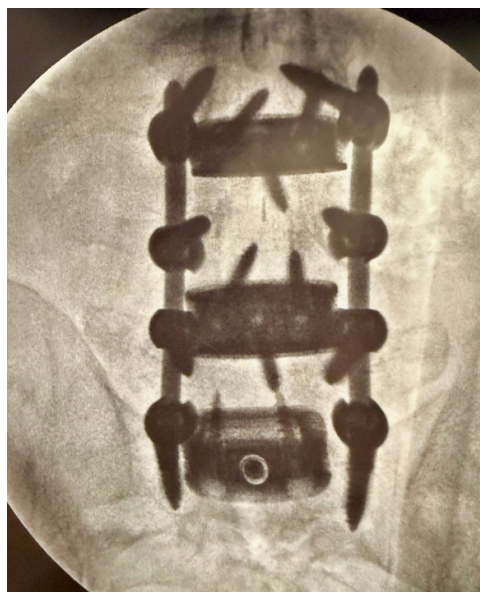
3D printed Pedicle Screw Whitepaper OR

6.0mm x 40

6.5mm x 40

7.0mm x 40

7.0mm x 35

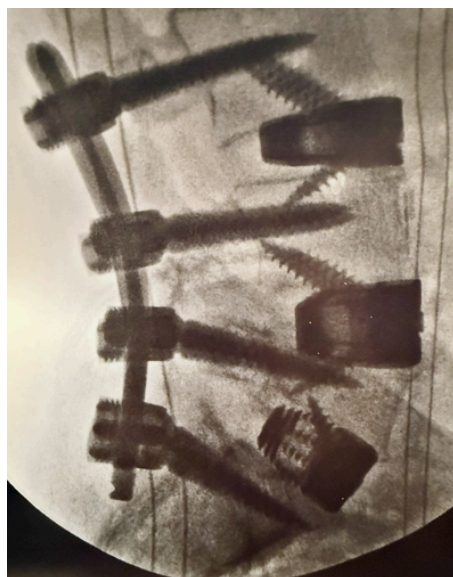


6.0mm x 40

6.5mm x 40

7.0mm x 40

7.0mm x 35



35x25x14mm 12° cage

35x25x18mm 12° cage

35x25x16mm 18° cage

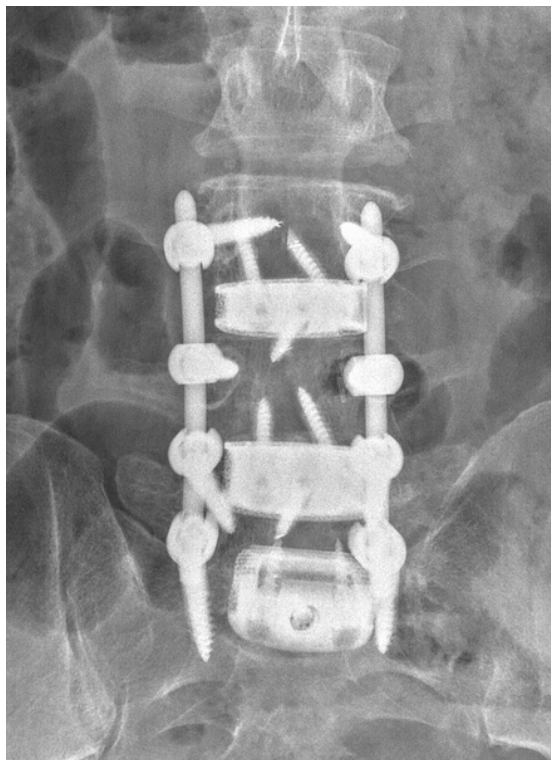
100mm Lordotic Rod x 2

3D printed Pedicle Screw Whitepaper Follow-Up X-rays

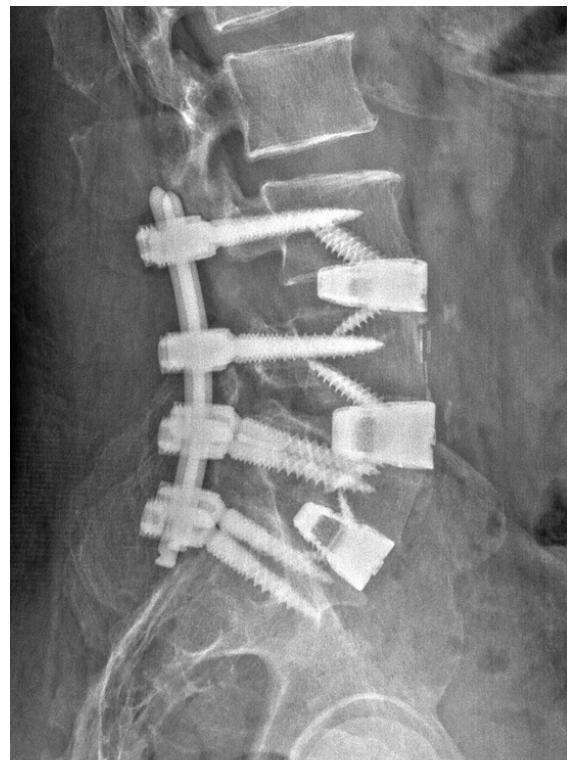
2-6 weeks

3 months

6 months



AP



Lateral

Complications

Screw Loosening
Screw Fracture

Infections
Revision

None
Other