



Cervical

Case Studies

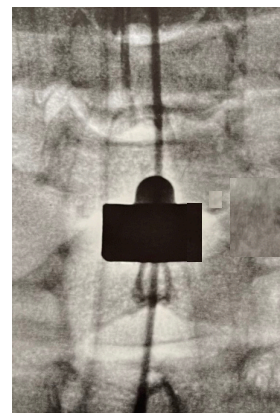




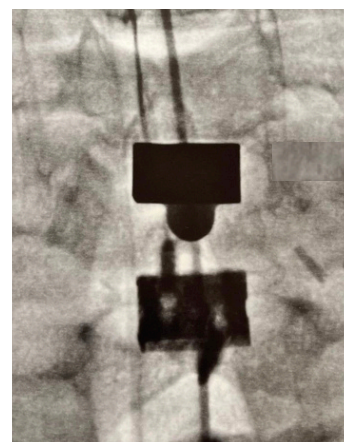
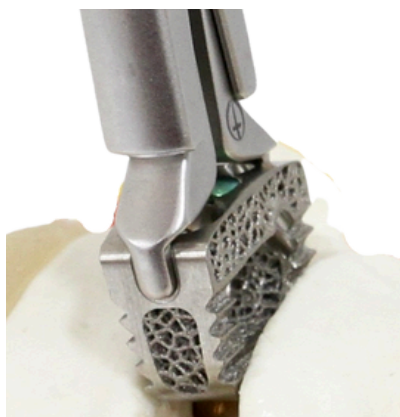
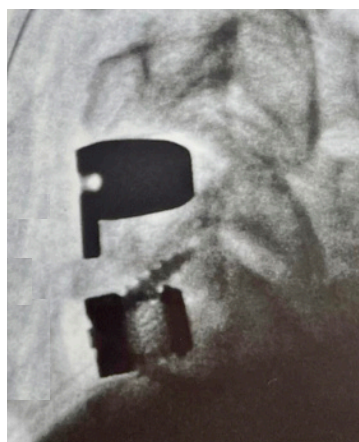
54 y/o Male with HNP C5-7
DOS 9/07/22



2nd level

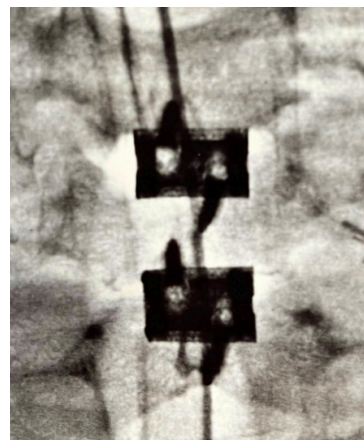


2nd level



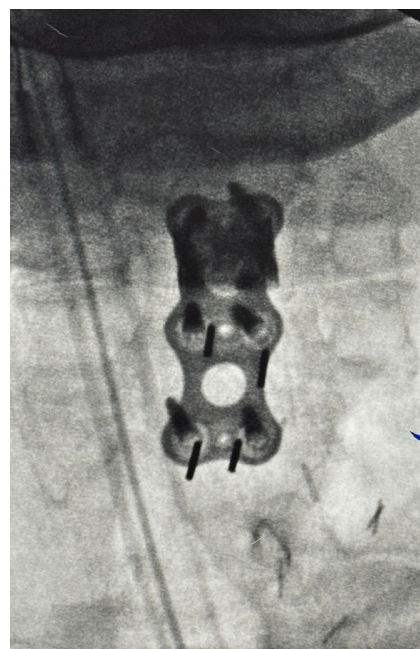
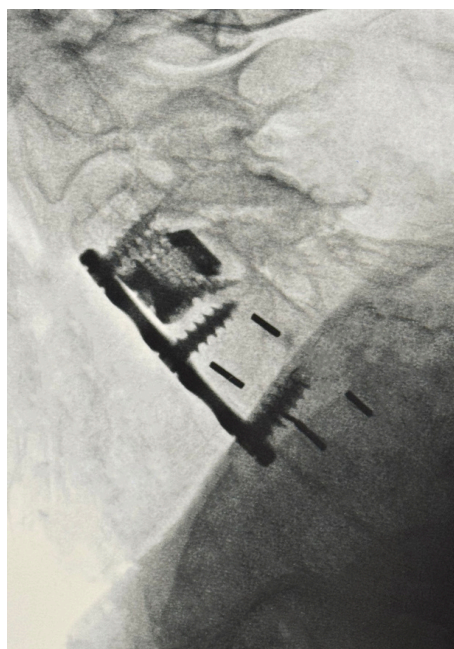
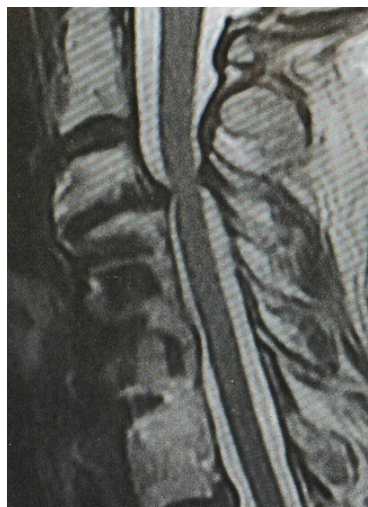
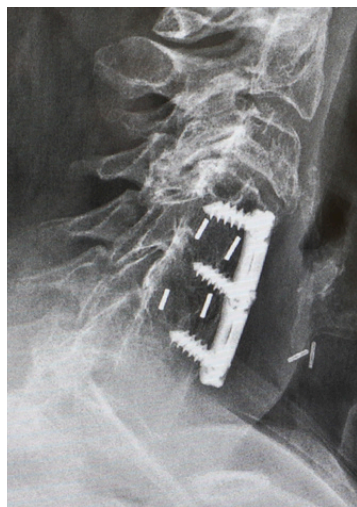
9mm

10mm



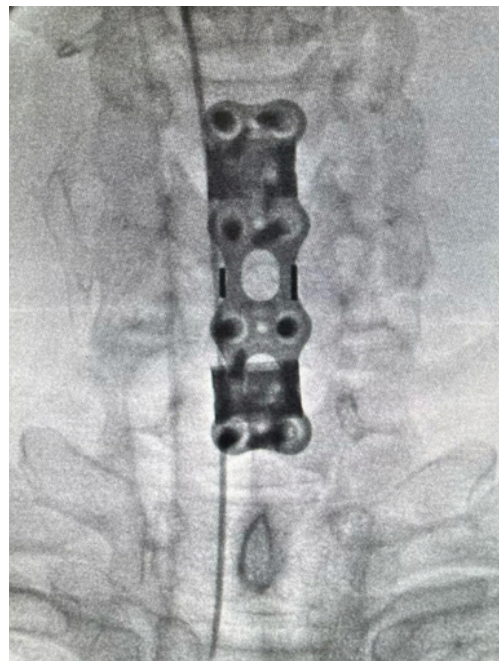
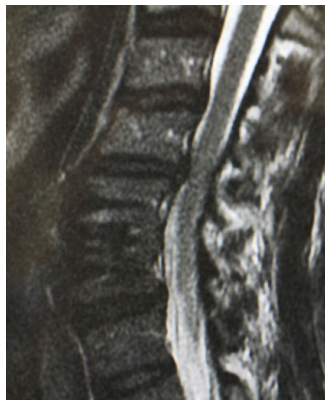


58 y/o Female s/p C4-C6 Fusion and Severe Spinal Stenosis C3/4
DOS 11/1/23

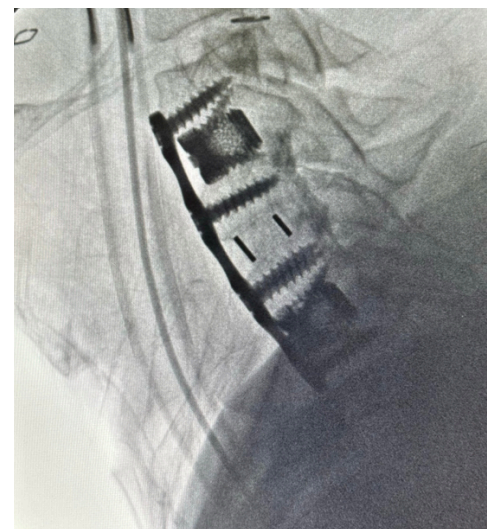




52 y/o male previous C5/6 Fusion with Stenosis C4/5 & C6/7
DOS 11/8/23

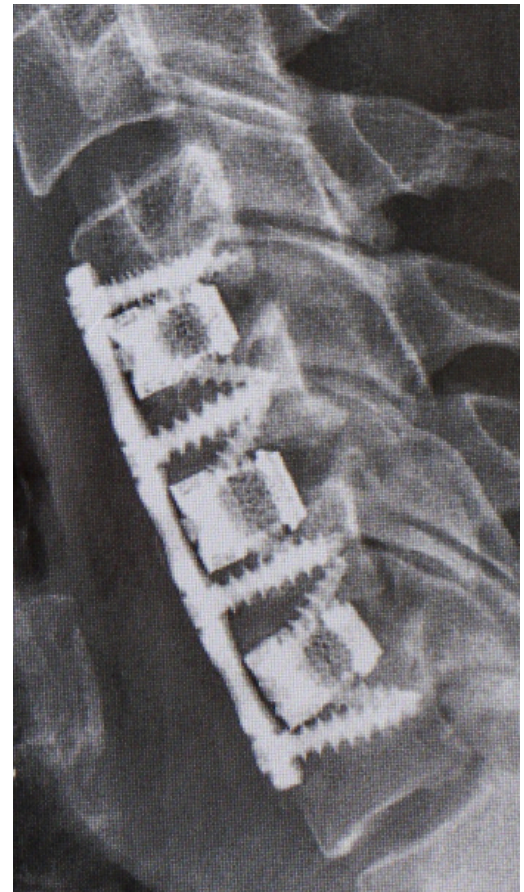
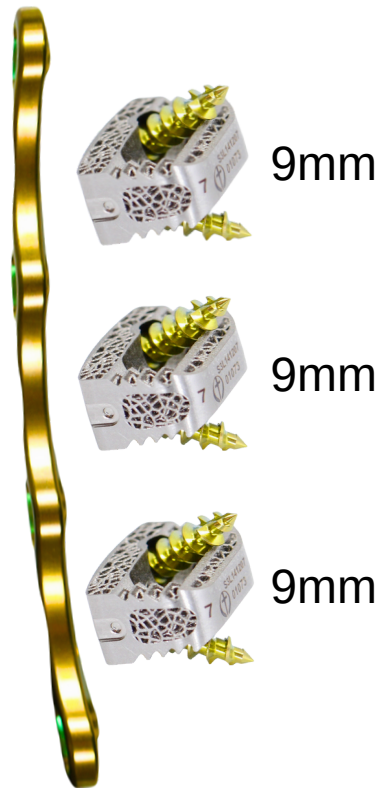
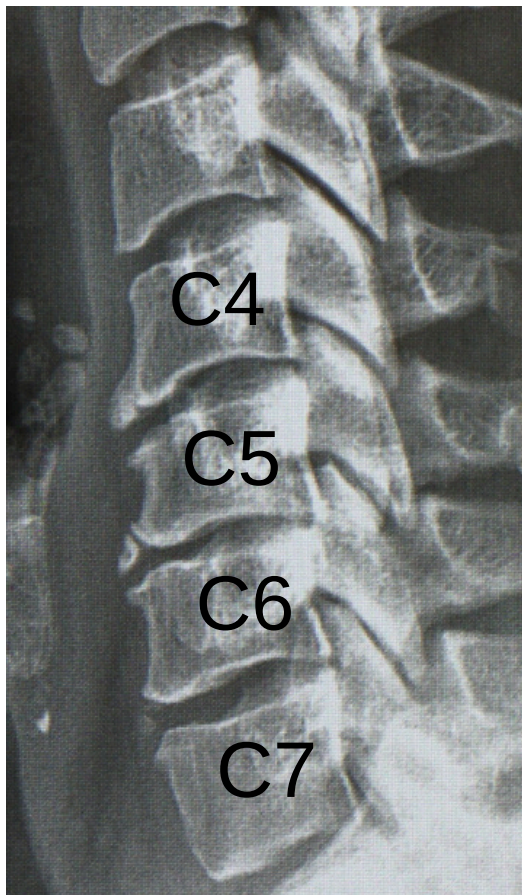


53mm Plate





60 y/o Male with Stenosis C4-C7 Fusion with Plate
DOS 10/05/22

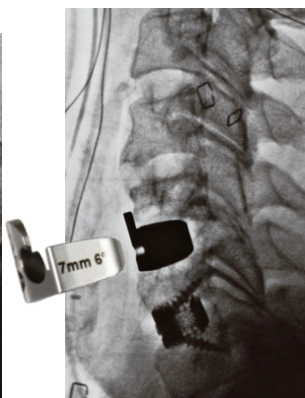
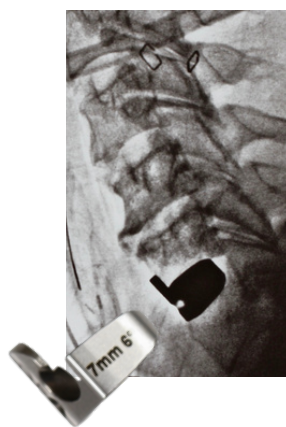
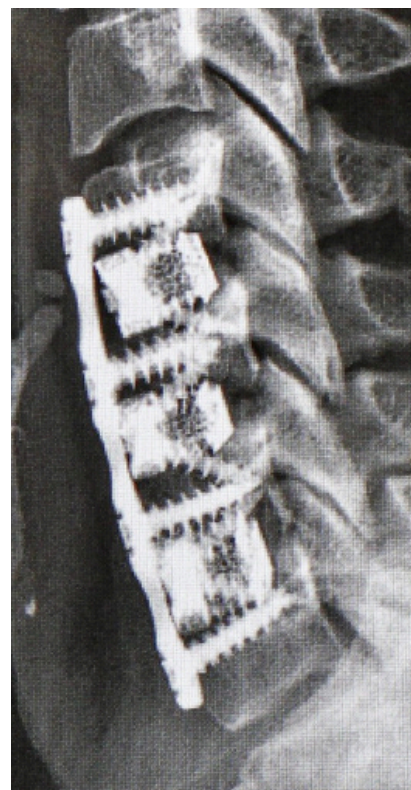
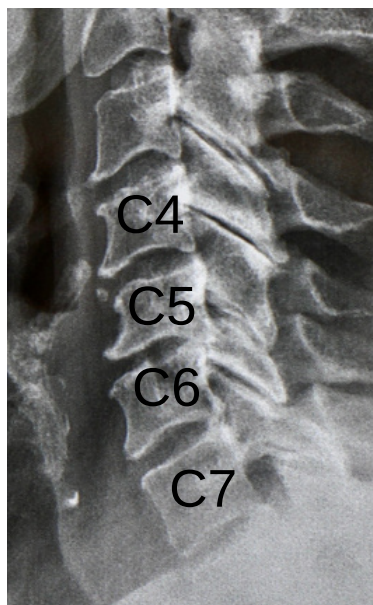


53mm Plate





48 y/o Female with Stenosis C4-C7 Fusion with Plate
DOS 9/26/22

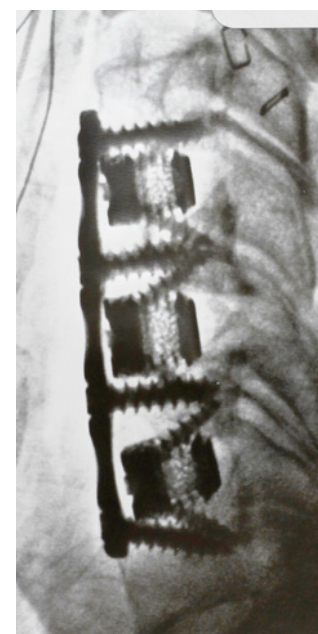
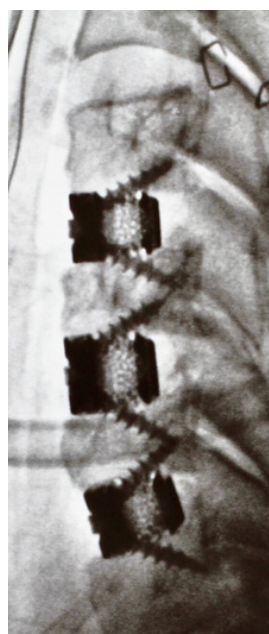
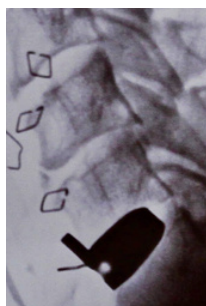
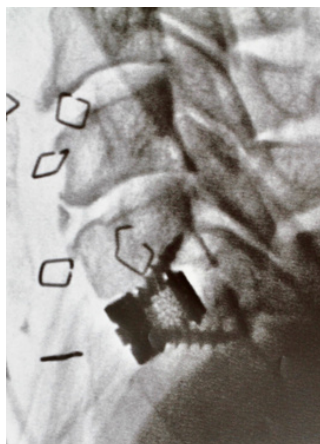
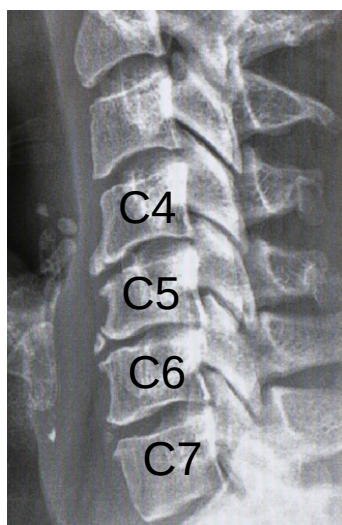


50mm Plate





59 y/o Female with Stenosis C4-C7 Fusion with Plate
DOS 11/09/22

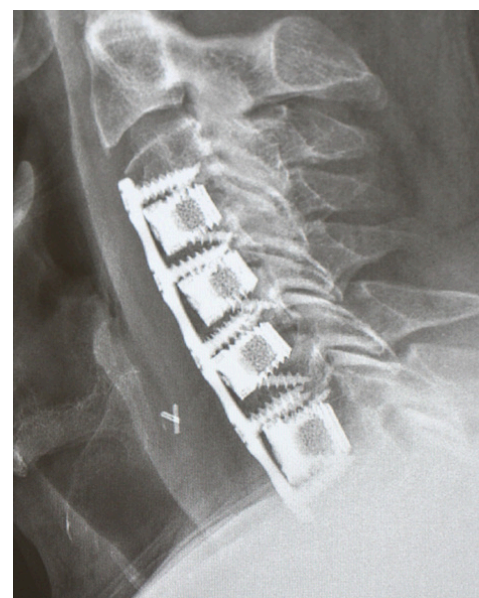
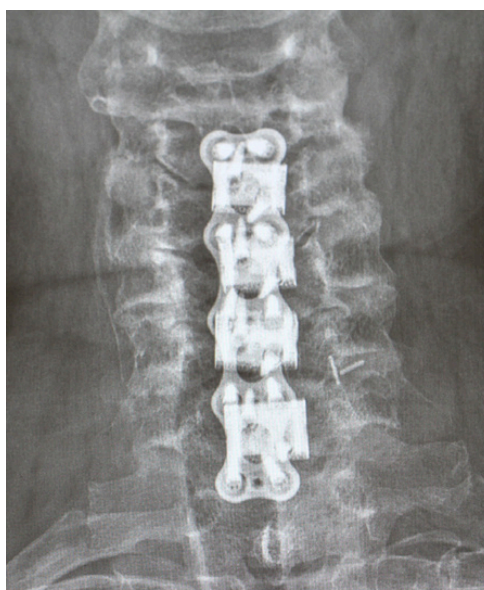


47mm Plate



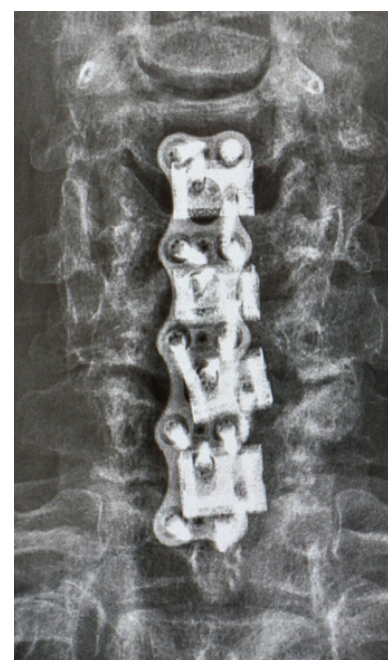
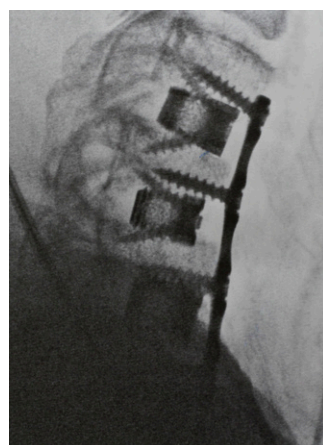
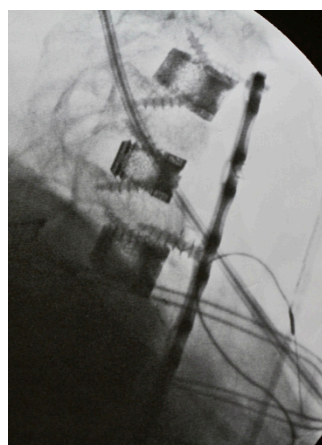
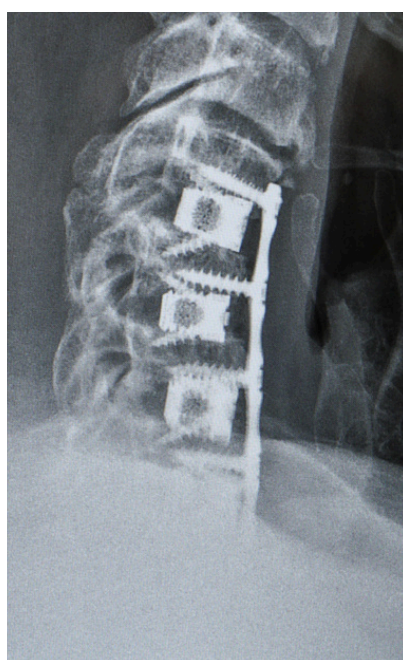
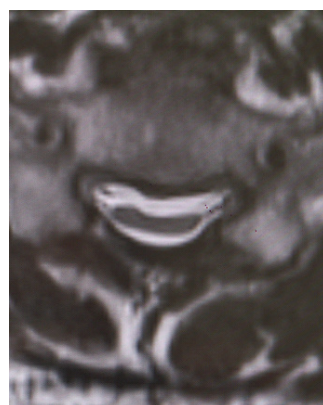


58 y/o Male with Stenosis C3-C7 Fusion with Plate
DOS 7/06/23



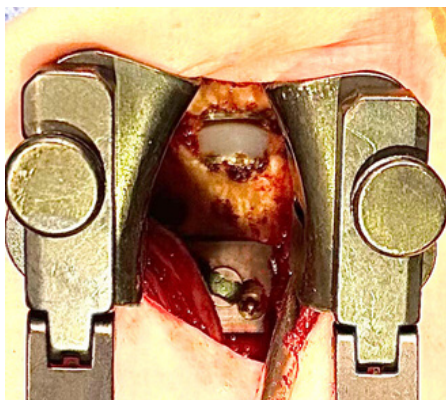
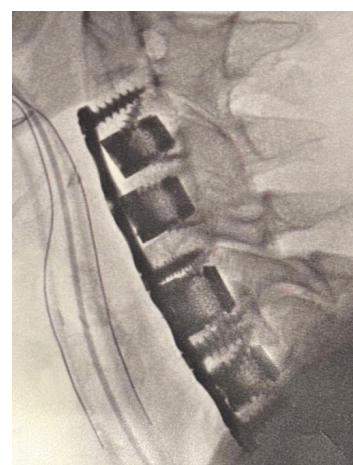
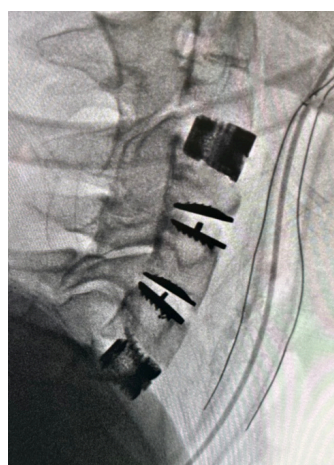
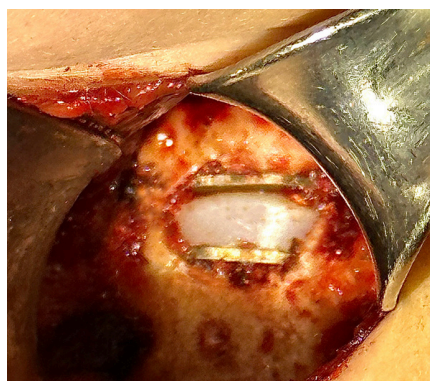


61 y/o Male s/p Posterior Laminectomy resulting in Kyphosis
and Myelomalacia
DOS 9/25/23



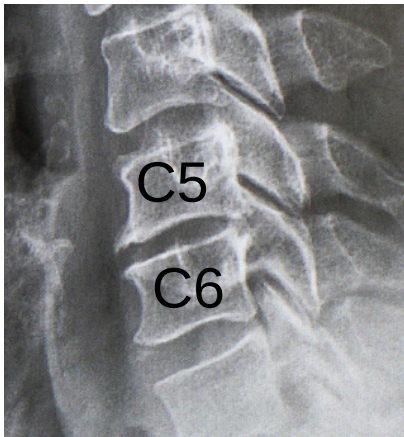


38 y/o Female s/p Artificial Disc C4/5 & C5/6 Stenosis C4-C7
Fusion with Plate
DOS 10/23/23

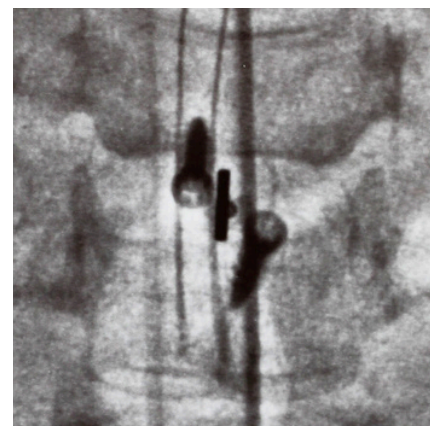
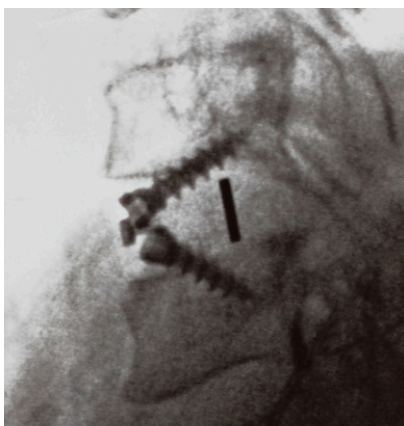
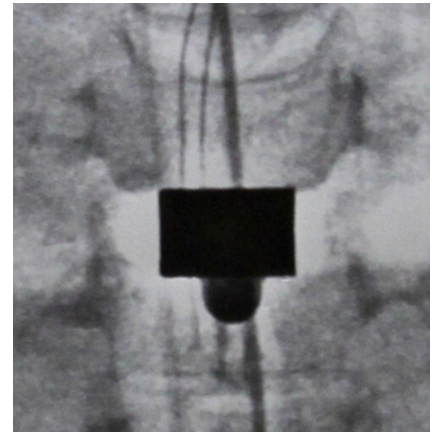
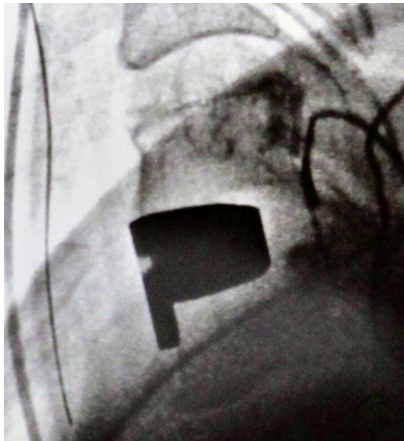




48 y/o Male C5/6 HNP & Bicep weakness
DOS 8/3/22

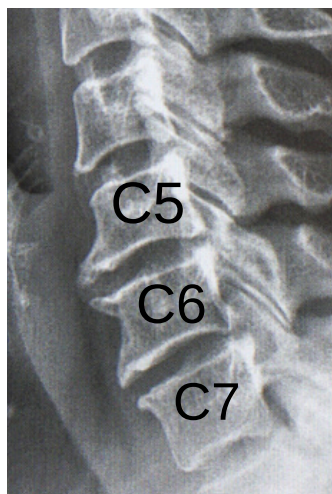


Trial-Centered





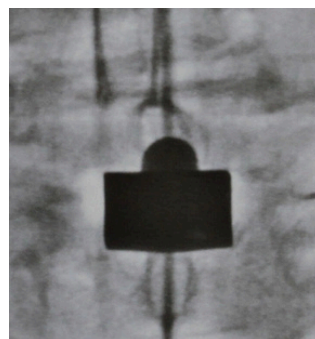
55 y/o Female with Stenosis and Bilateral arm pain
DOS 5/25/22



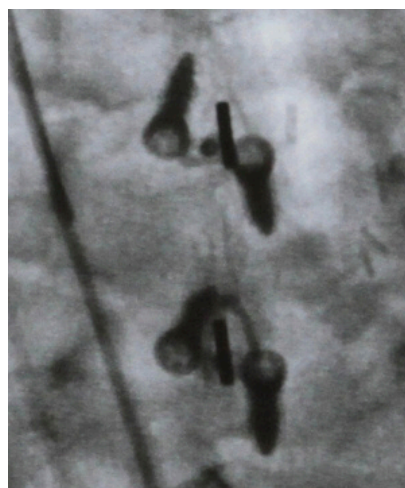
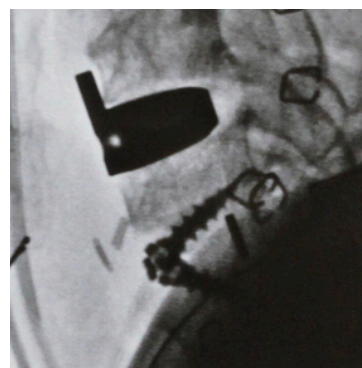
1st level



Trial-Centered



2nd level



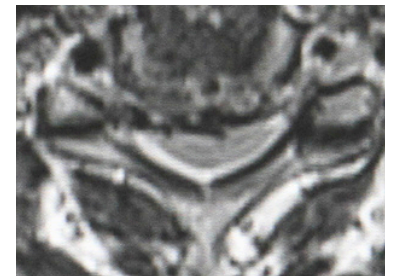
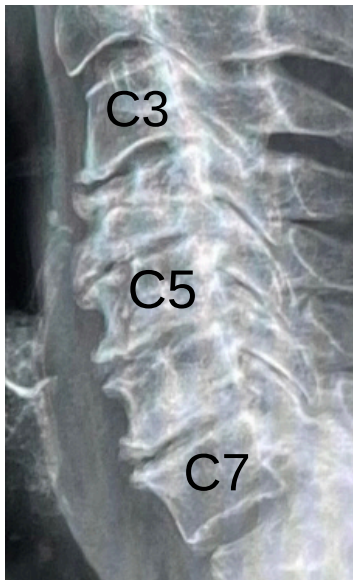
9mm

10mm





62 y/o Female with Myelopathy C3-C7 Fusion with Plate
DOS 6/08/22

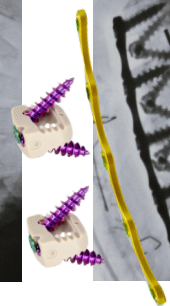
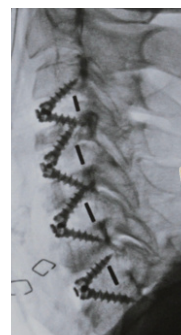
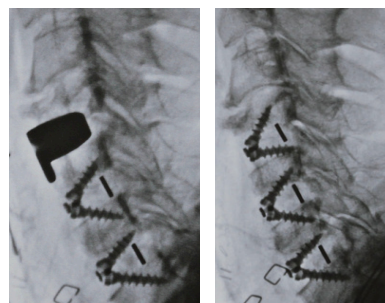
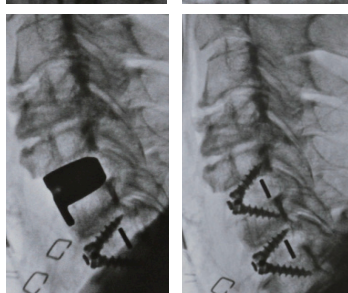
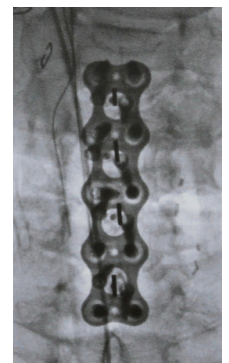
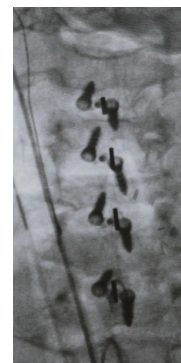
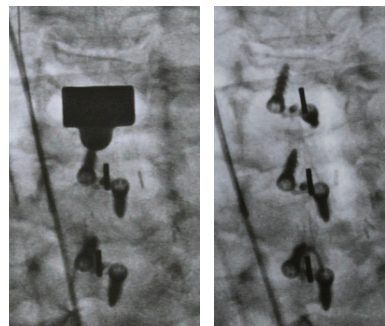
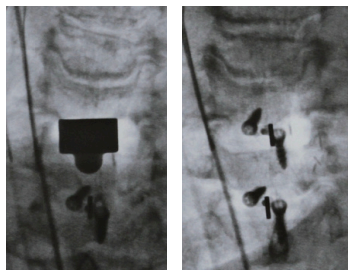


60mm
Plate

4th level

3rd level

2nd level

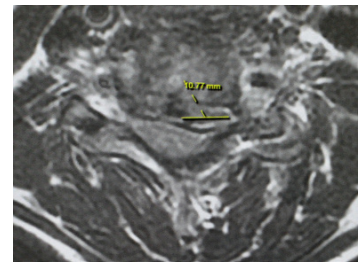




EMINENT
SPINE



58 y/o Female with Stenosis C5-T1 Fusion with Plate DOS 7/18/22



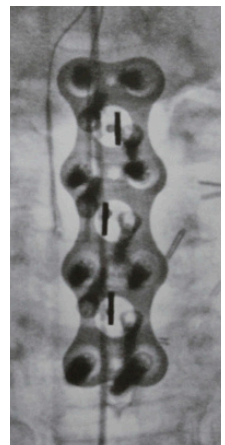
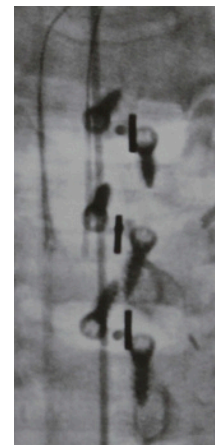
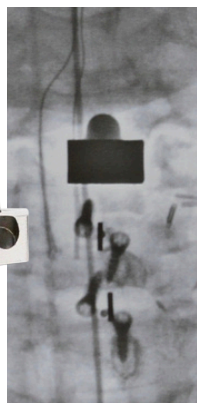
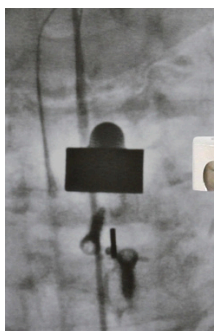
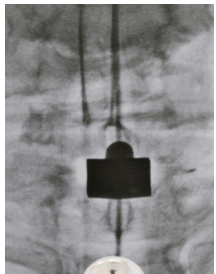
47mm
Plate

C5-T1

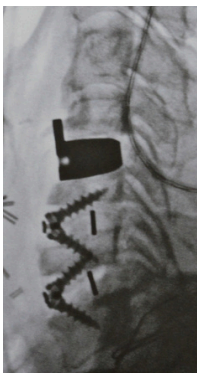
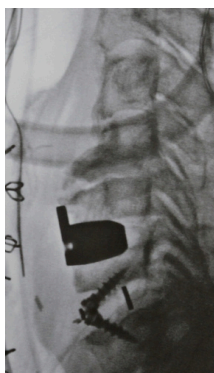
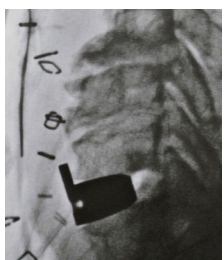
3rd level

2nd level

1st level



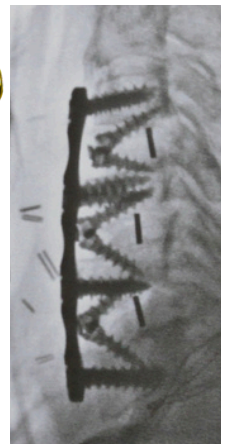
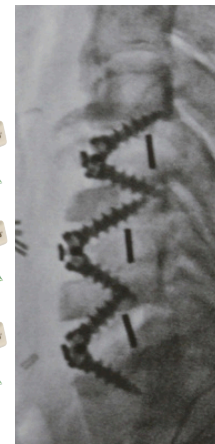
Trial-Centered



9mm

9mm

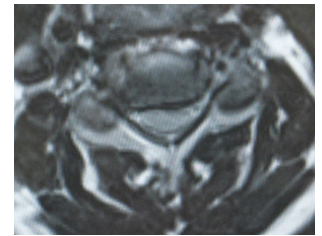
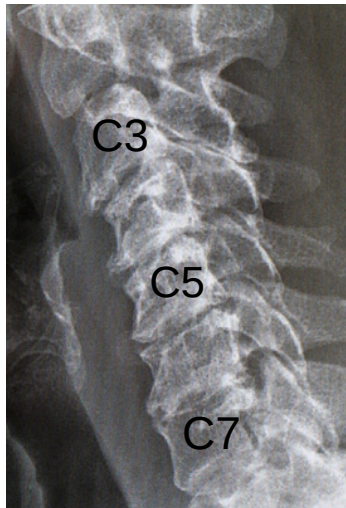
9mm



EMINENT
SPINE



58 y/o Female with Stenosis C3-C7 Fusion with Plate
DOS 7/06/22

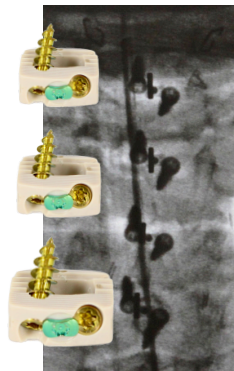
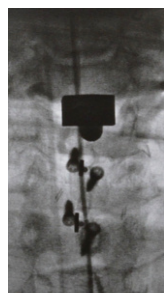
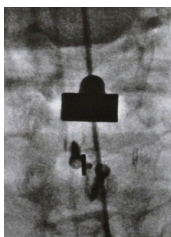
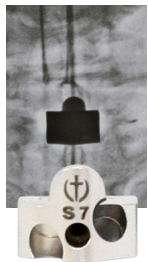


4th level

3rd level

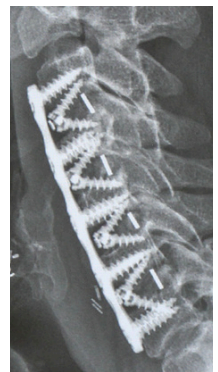
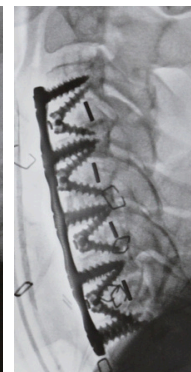
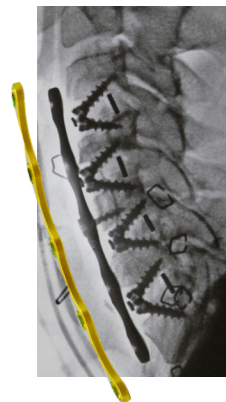
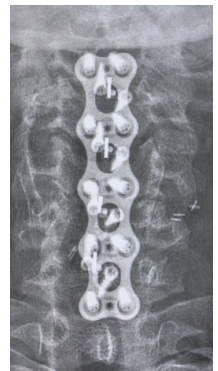
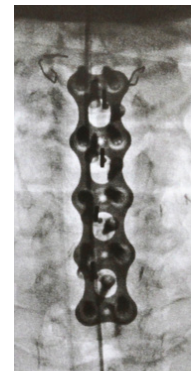
2nd level

1st level



9mm
9mm
9mm
9mm

64mm
Plate



6 months post-op



Lattice Features

A True Cancellous-Trabecular 3D printed Lattice
Pore sizing ranging from 300-700µm
60% or more porosity

