



EMINENT
— SPINE —

3D Titanium Pedicle Screw

Case Studies



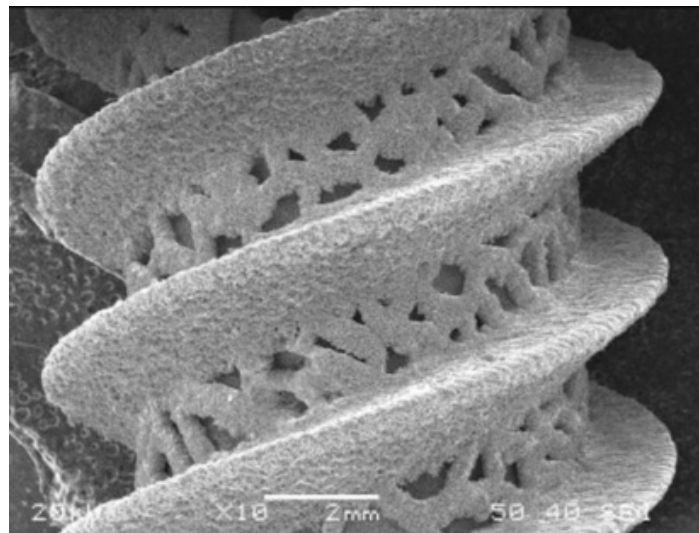
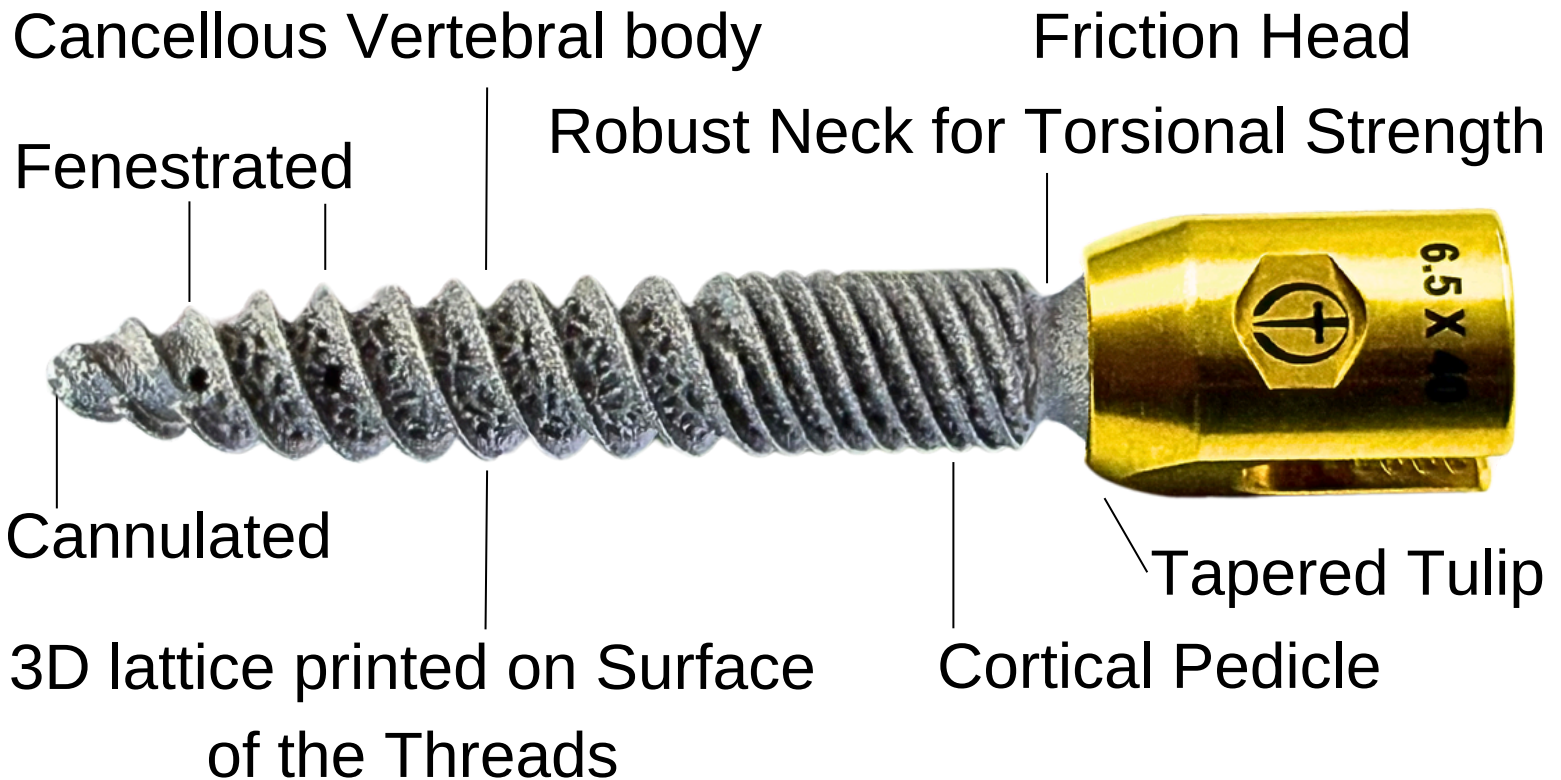
THE 1st 510(k) FDA 3D TITANIUM PEDICLE SCREW
APPROVED IN THE WORLD



— Eminent Spine —



FEATURES



Osteo-integrated with the Bone

3D PRINTED PEDICLE SCREW

Triple lead screw technology for ease of insertion and greater pull out strength



- Cannulated
- Cutting Kerf
- Cancellous Vertebral body
- Fenestrated
- 3D lattice printed on Surface of the Threads
- Cortical Pedicle
- Tapered Tulip & Friction Head
- Robust Neck for Torsional Strength

Comprehensive universal instrumentation set

SCREW OPTIONS

Diameter

- 6.00mm
- 6.50mm
- 7.00mm
- 7.50mm
- 8.00mm

Length

- 40-60mm | 5mm
- 40-60mm | 5mm
- 35-60mm | 5mm
- 35-60mm | 5mm
- 35-60mm | 5mm

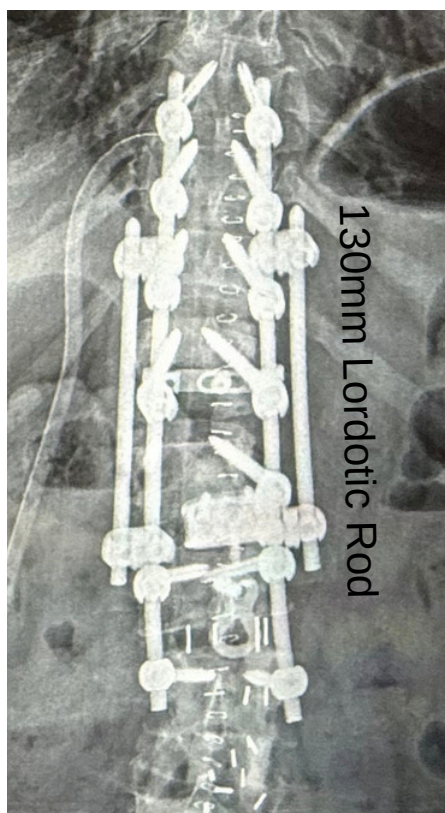
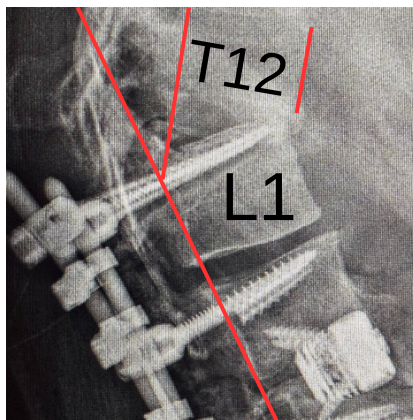
Non-Cannulated

Cannulated

57 y/o L1-L4 Fusion & T12-L1 Junctional Kyphosis

DOS 9/15/25

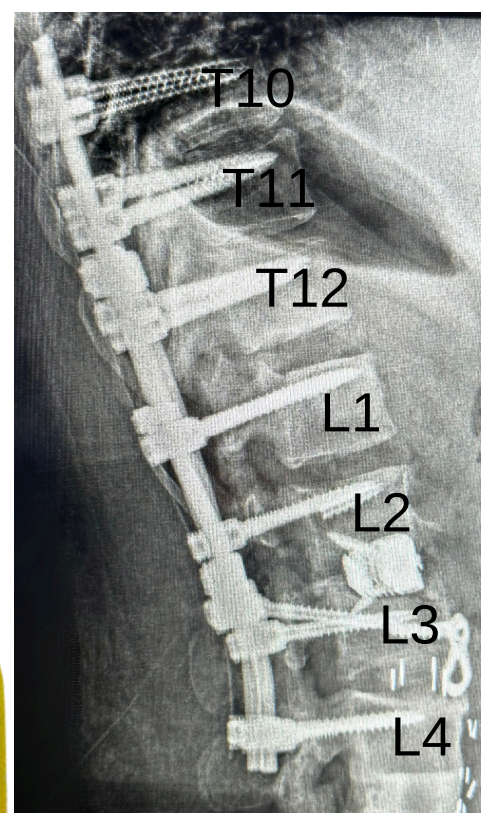
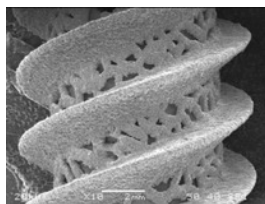
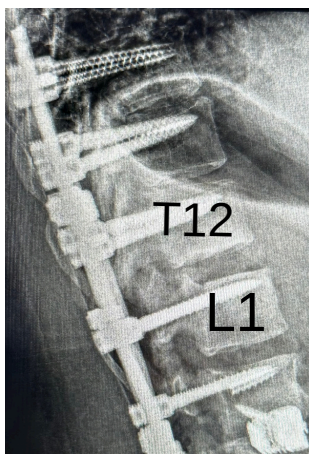
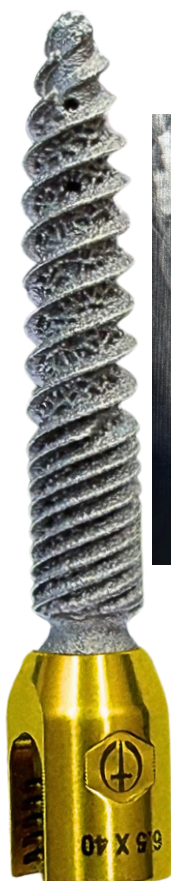
Halo around L1 screws



130mm Lordotic Rod



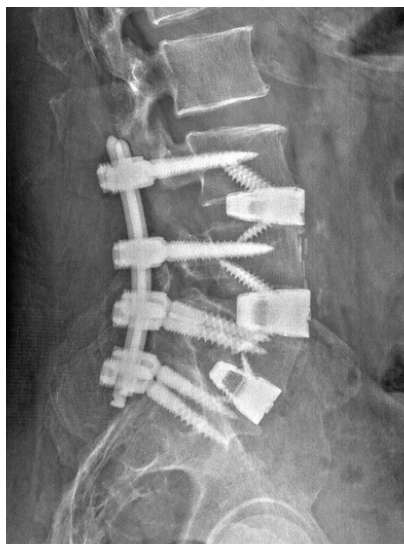
Rod to Rod Connector



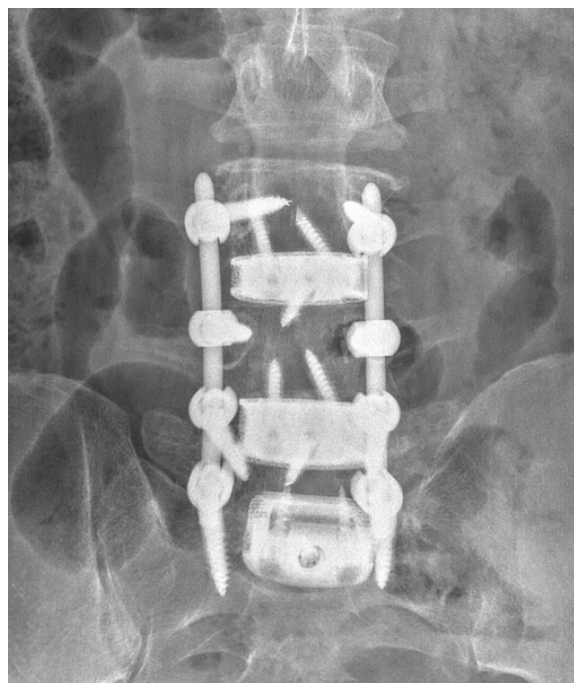
THE FIRST 510(k) FDA 3D TITANIUM PEDICLE SCREW LUMBAR SURGERY IN THE WORLD



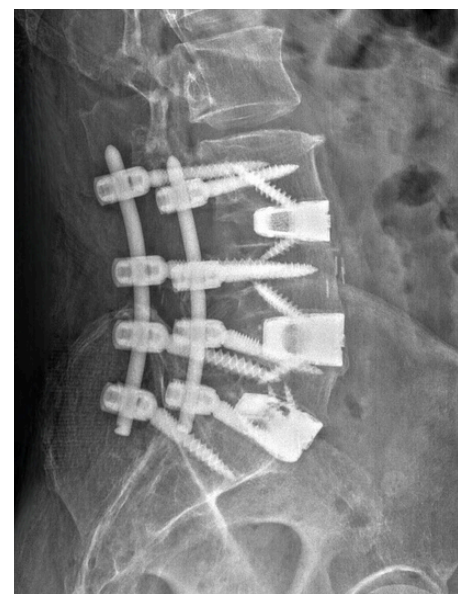
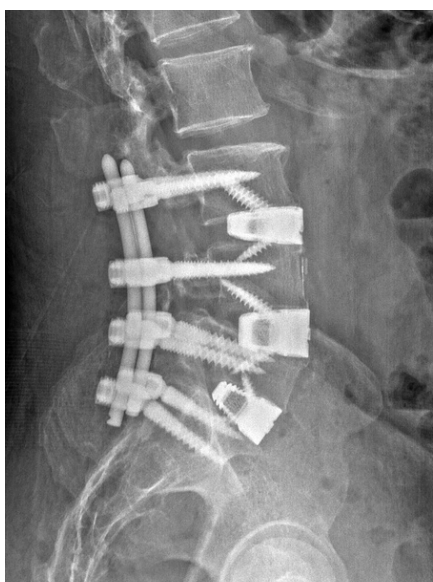
DOS 7/07/25



6.0mm x 40
6.5mm x 40
7.0mm x 40
7.0mm x 35



35x25x14mm 12° cage
35x25x18mm 12° cage
35x25x16mm 18° cage
100mm Lordotic Rod



3D PRINTED PEDICLE SCREW

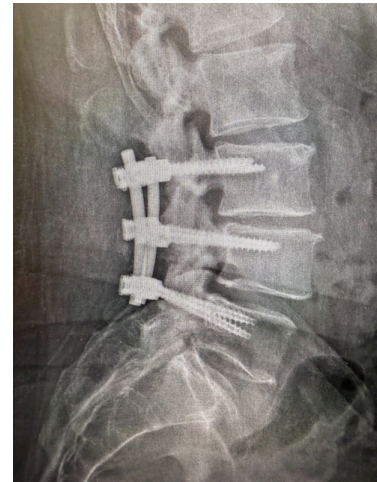
61 y/o Post-Laminectomy Syndrome & Stenosis & Severe Neurogenic Claudication



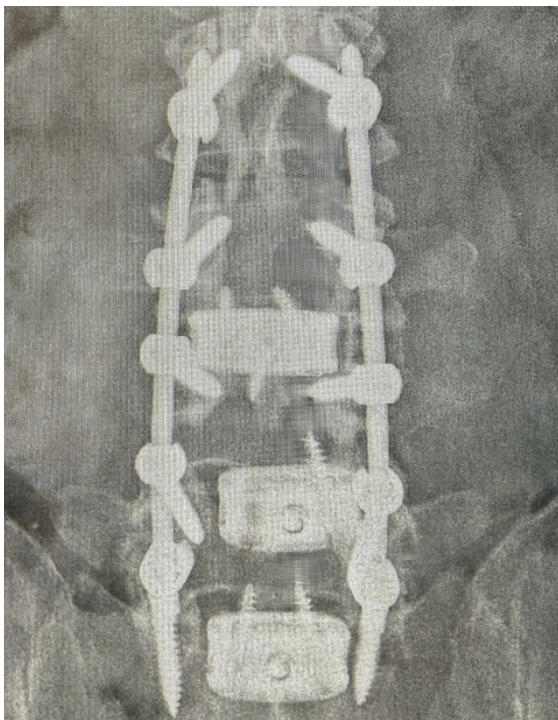
DOS 7/16/25

B L4 & L5 screws loose upon removal

4 of 6 screws loose = 66%



Full Spinal Canal and Nerve Root Decompression



6.0mm x 50

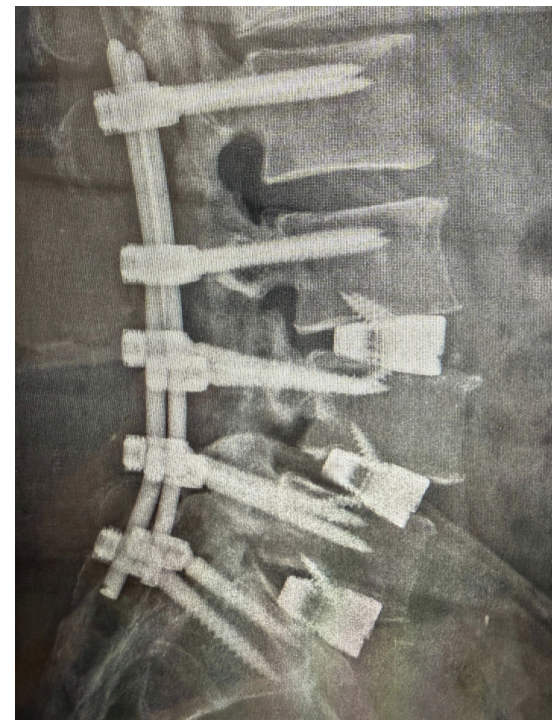
6.5mm x 50

6.5mm x 50

6.5mm x 50

7.0mm x 40

7.0mm x 45



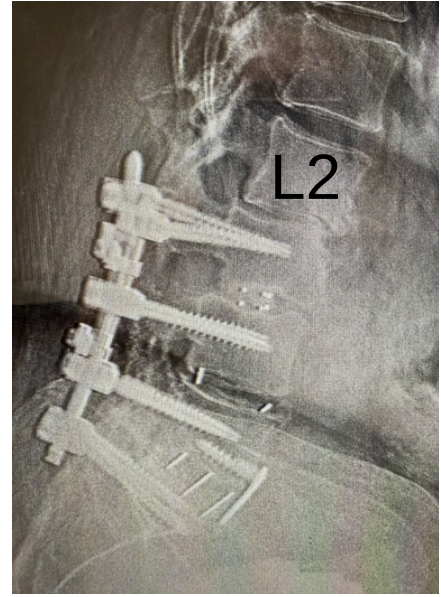
4.5 hrs

150mm Lordotic Rod

35x25x16mm 18° cage	L3/4
35x25x16mm 18° cage	L4/5
35x25x18mm 18° cage	L5/S1

3D PRINTED PEDICLE SCREW

63 y/o L3-S1 Fusion & L2-3 Junctional Kyphosis & BMI 47%
DOS 8/04/25



6.0mm x 45

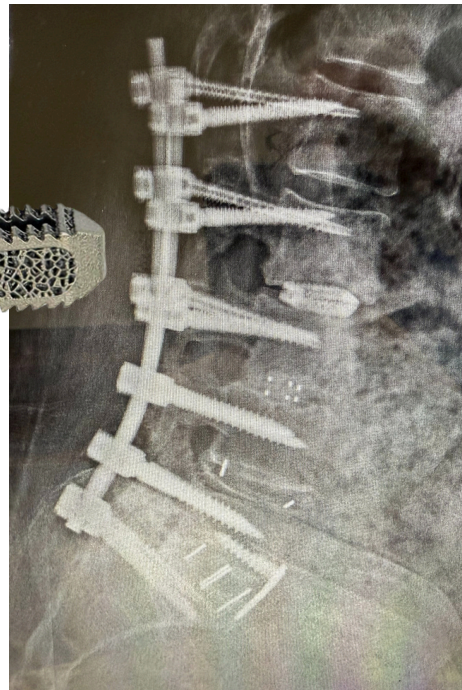
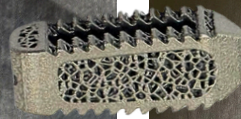
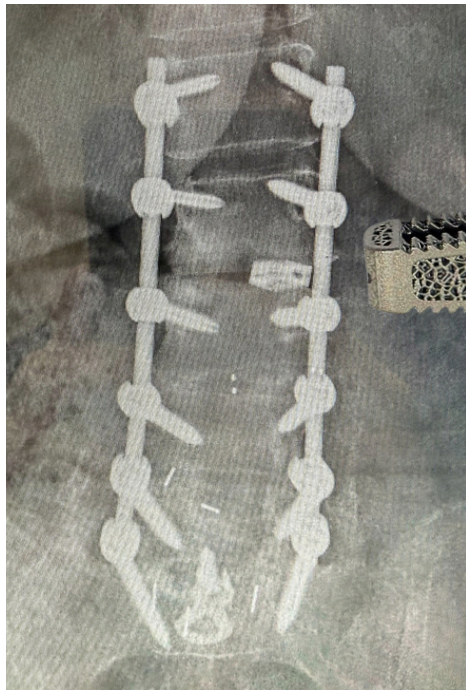
6.0mm x 45

6.5mm x 45

6.5mm x 45

7.5mm x 45

7.5mm x 45



5.5mm x 50

5.5mm x 50

6.5mm x 45

6.5mm x 45

7.5mm x 40

7.5mm x 45

160mm Lordotic Rod 28x9x8mm
6° cage

51 y/o L4-S1 Attempted Fusion & L3-4 Junctional Stenosis

BMI 45%

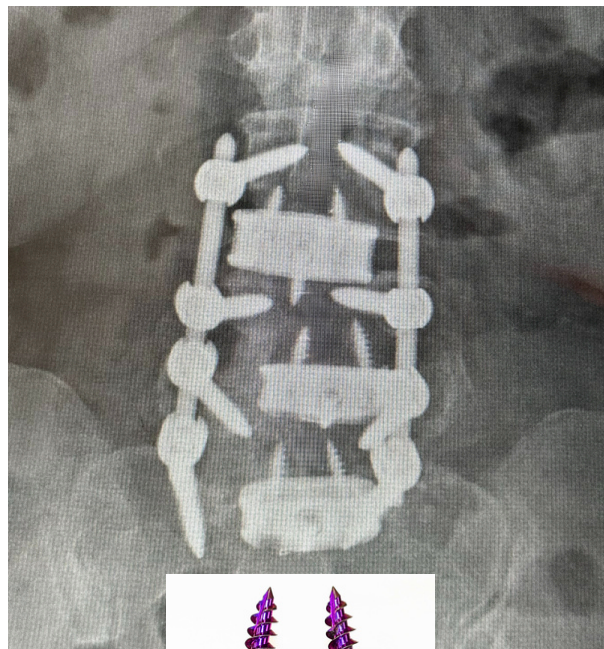
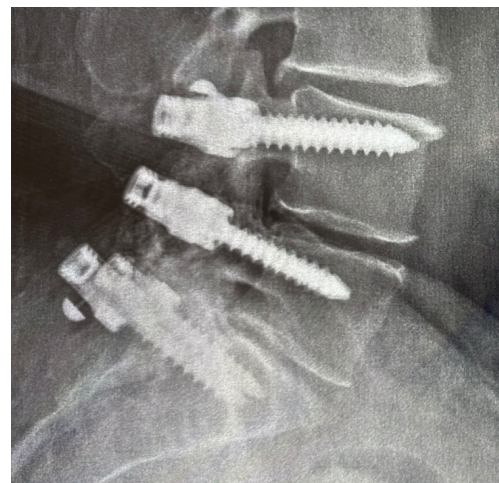
Halo around screw

DOS 8/13/25



B L4 & L5 screws loose upon removal

4 of 6 screws loose = 66%

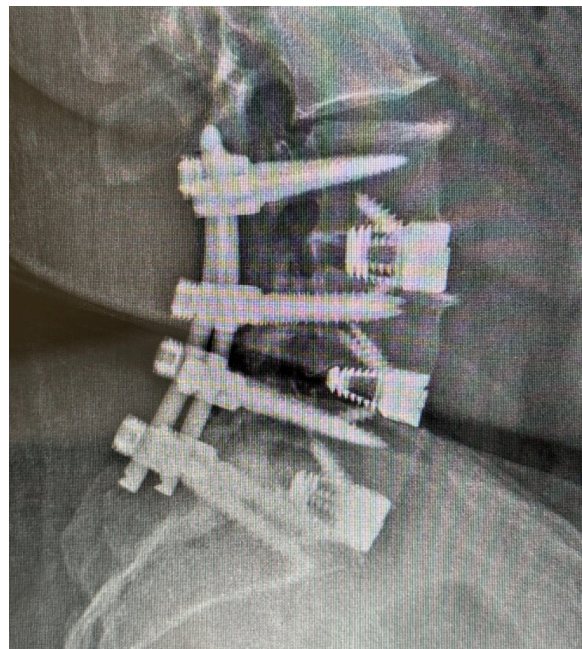


6.0mm x 40

6.5mm x 40

6.5mm x 40

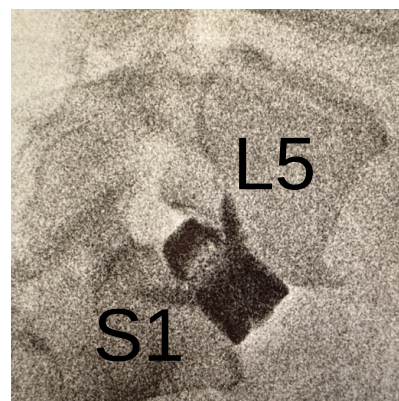
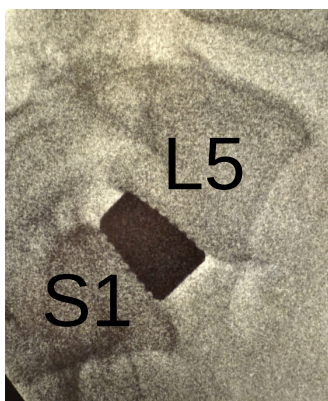
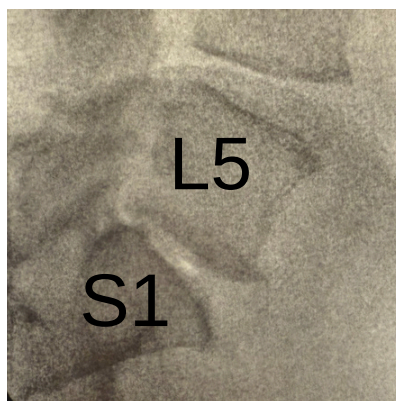
7.0mm x 45



95mm Lordotic Rod

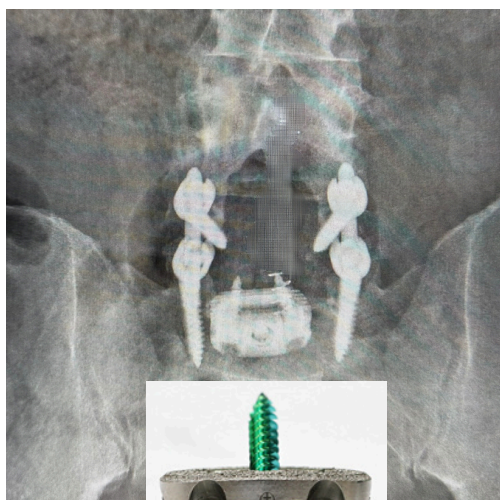
35x25x16mm 12°cage	L3/4
35x25x14mm 18°cage	L4/5
35x25x14mm 18°cage	L5/S1

61 y/o Post-Laminectomy Syndrome & Recurrent Disc
Herniation L5/S1
DOS 9/10/25

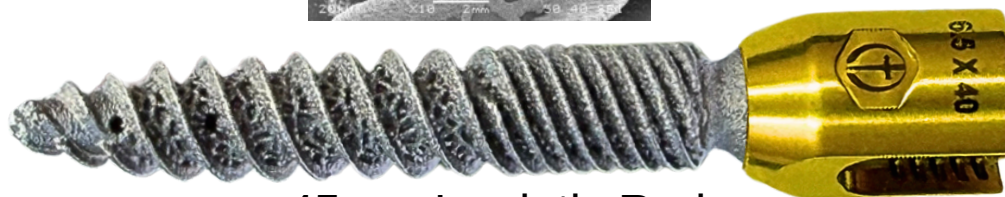
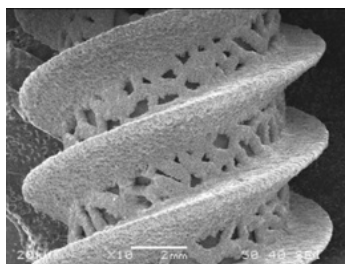
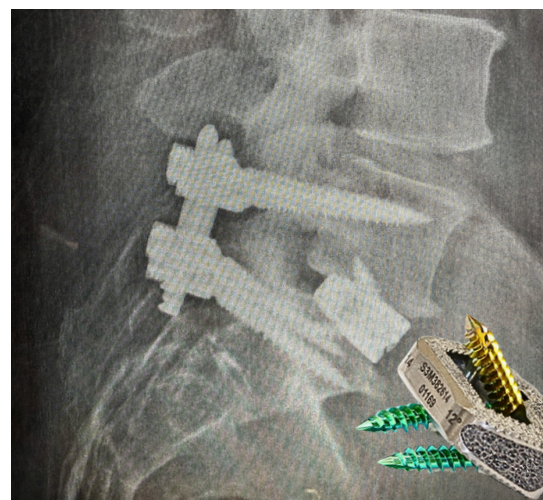


OR Trial

35x25x14mm 12° cage



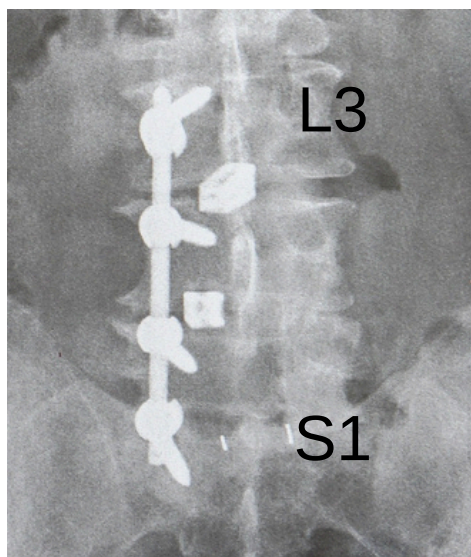
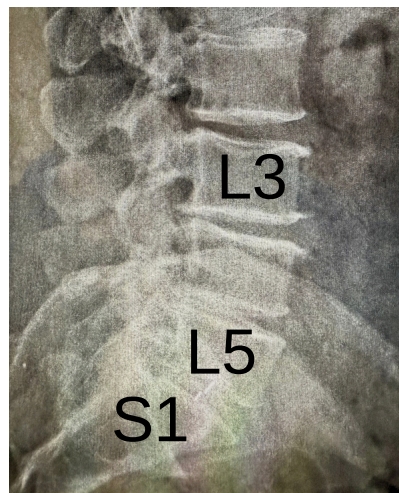
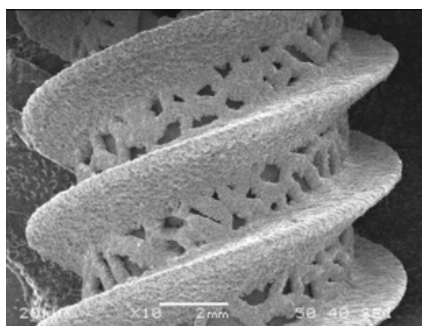
6.5mm x 45
7.0mm x 40



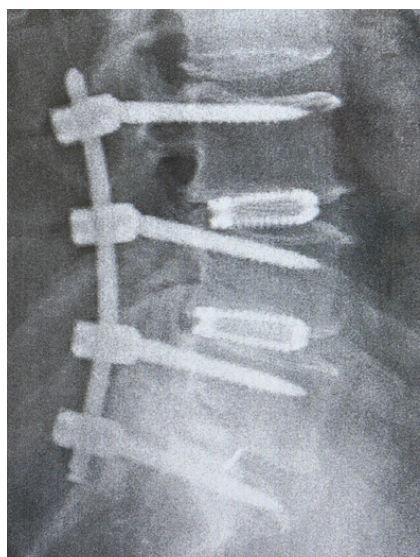
45mm Lordotic Rod

60 y/o Post-Laminectomy Syndrome & Stenosis & Unilateral Symptoms

DOS 9/24/25



- 6.0mm x 50
- 6.0mm x 50
- 6.0mm x 45
- 6.5mm x 45



31x9x10mm
6° cage

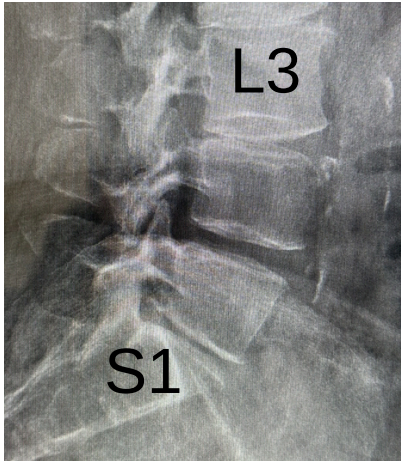


110mm Lordotic Rod

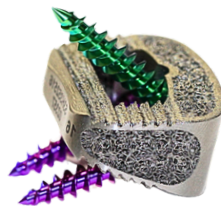
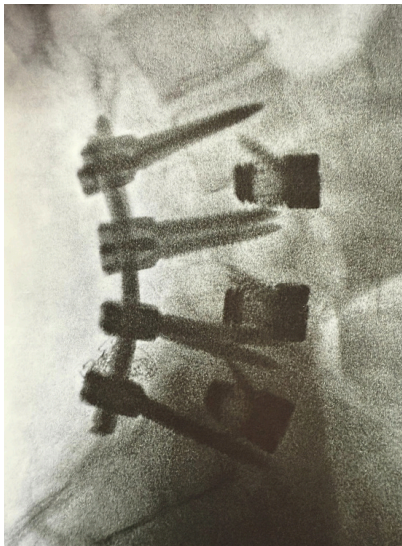
3D PRINTED PEDICLE SCREW

60 y/o L3-S1 Multi-level Stenosis

DOS 10/01/25



35x25x16mm
12°
35x25x16mm
12°
35x25x16mm
18°

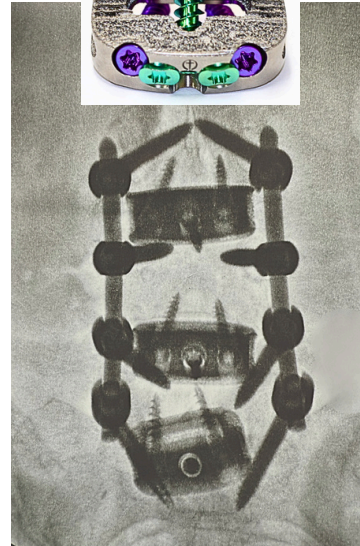


6.0x45

6.0x45

6.0x40

6.5x40

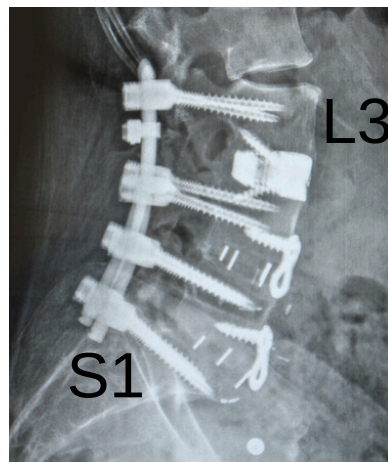
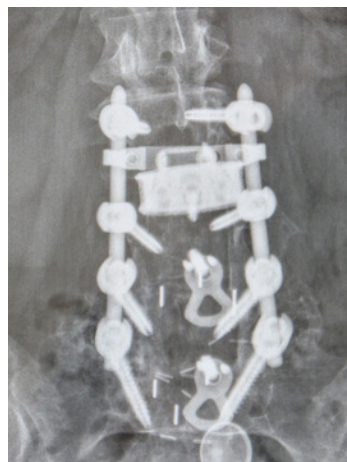


95mm Lordotic Rod

3D PRINTED PEDICLE SCREW

59 y/o L2-S1 Multi-level Stenosis

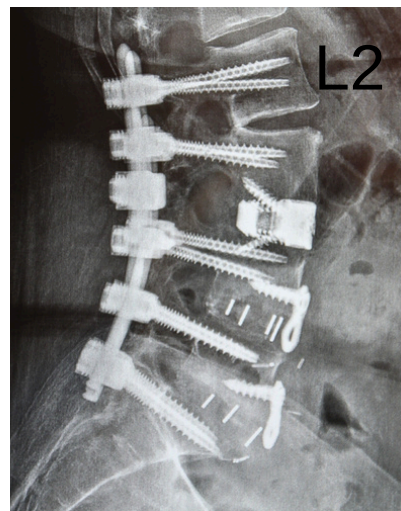
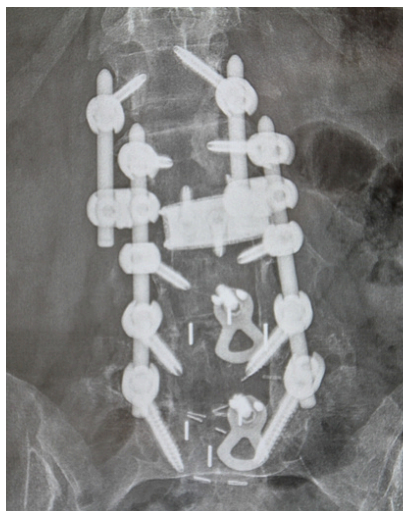
DOS 10/06/25



Rod to Rod Connector



4.75x45

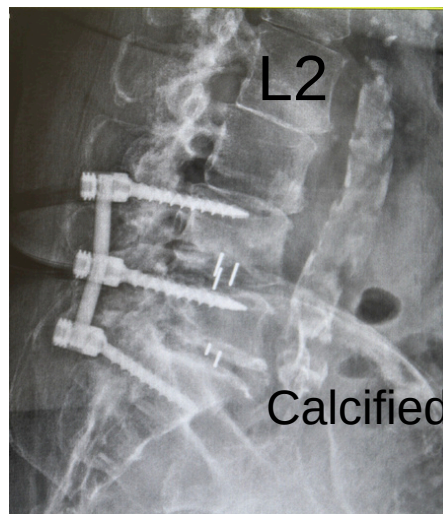
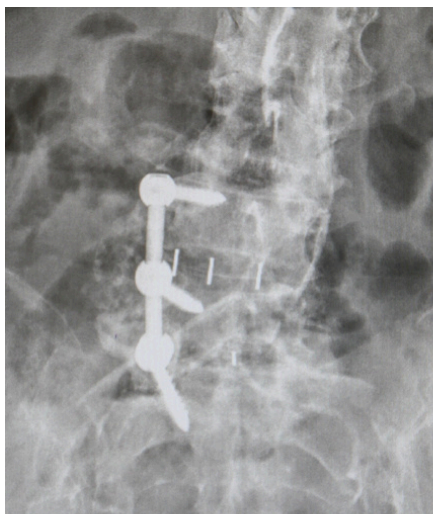


60mm Lordotic Rod



3D PRINTED PEDICLE SCREW

72 y/o Previous fusion L4-S1 & Junctional Stenosis
DOS 10/29/25



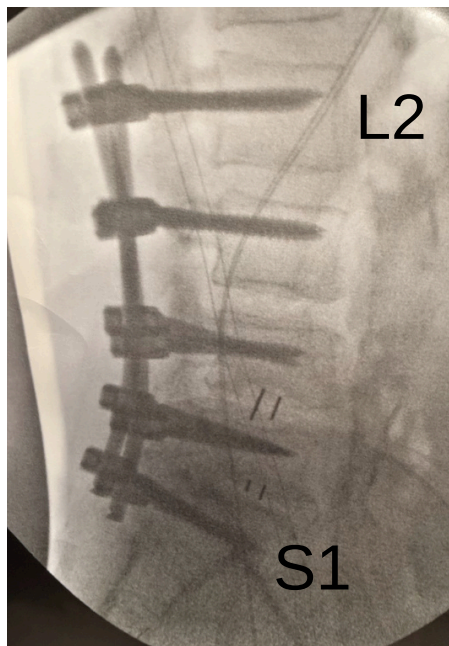
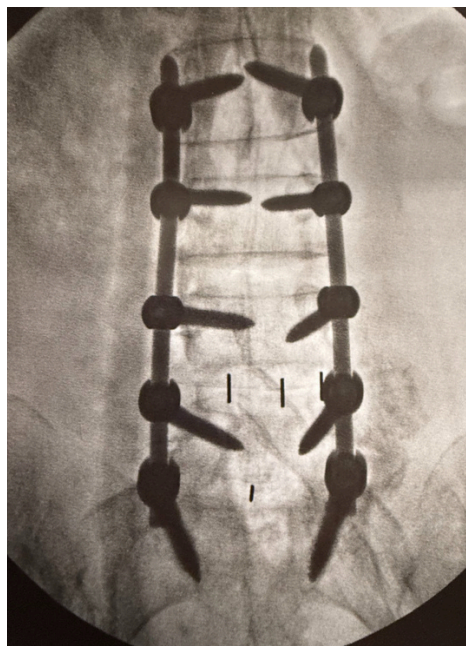
6.0mm x 50

6.0mm x 50

6.5mm x 45

6.5mm x 45

7.0mm x 45



6.0mm x 50

6.0mm x 50

6.0mm x 45

6.5mm x 45

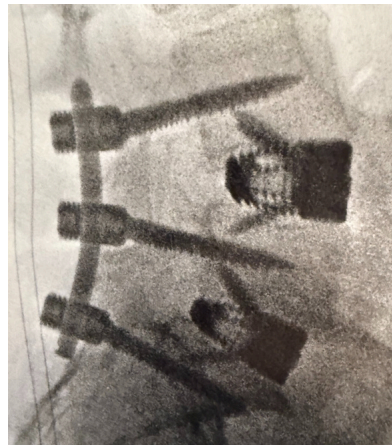
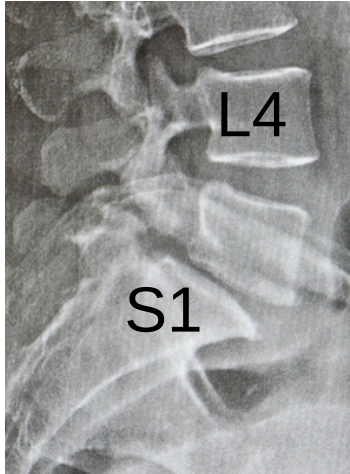
7.0mm x 40

140mm Lordotic Rod

3D PRINTED PEDICLE SCREW

62 y/o L4-S1 Multi-level Stenosis & Spondylolisthesis

DOS 11/19/25

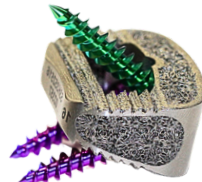


35x25x16mm
18°

35x25x14mm
18°



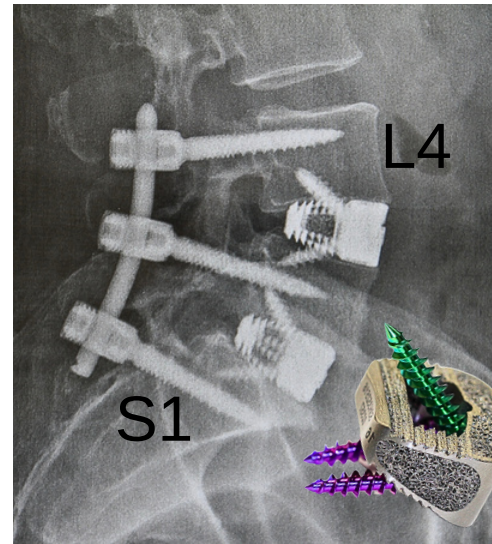
5.5 x 25mm screws



6.0 x 40

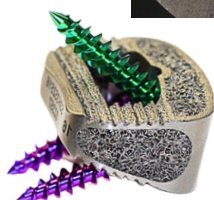
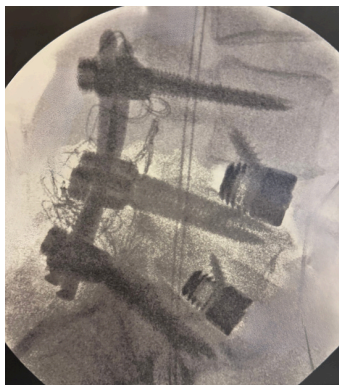
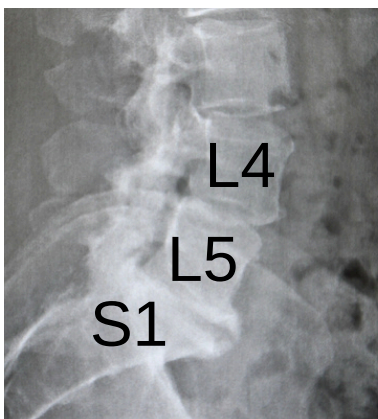
6.0 x 40

6.5 x 45

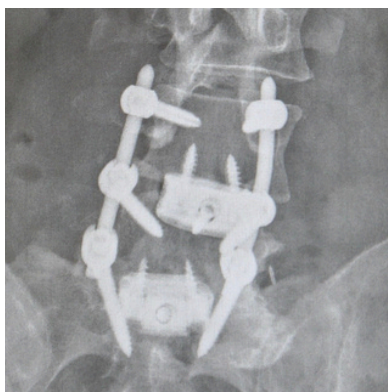


70mm Lordotic Rod

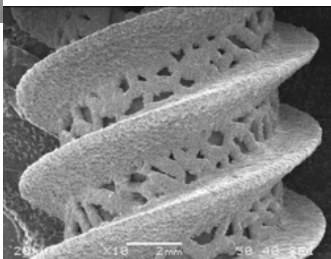
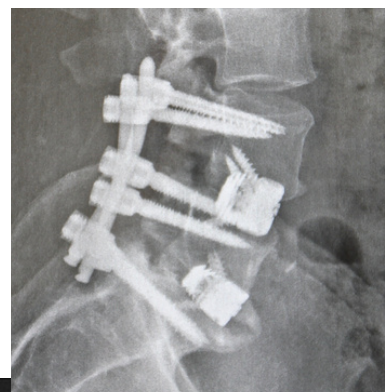
46 y/o Severe Disc Disease L4-S1
DOS 12/1/25



32x21x16mm 12° cage
32x21x14mm 12° cage



6.0mm x 45
6.5mm x 45
6.5mm x 45



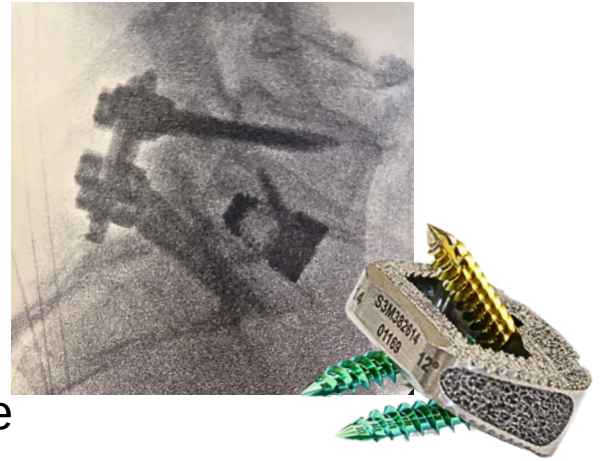
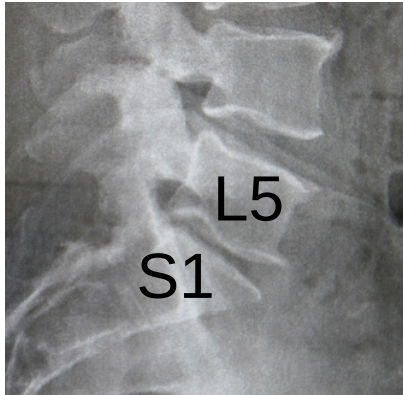
80mm Lordotic Rod



3D PRINTED PEDICLE SCREW

52 y/o Post-Laminectomy Syndrome & Recurrent Disc
Herniation L5/S1

DOS 12/4/25

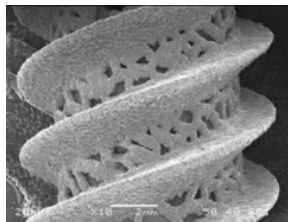
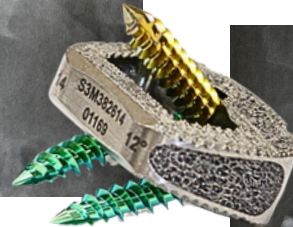
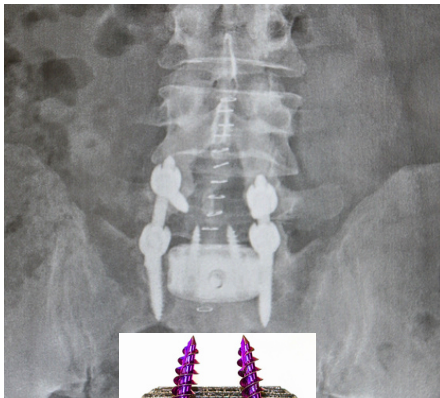


38x26x18mm cage
18°

6.0mm x 45
6.5mm x 45



6.0mm x 40
7.0mm x 40

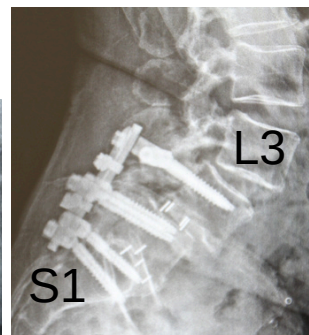
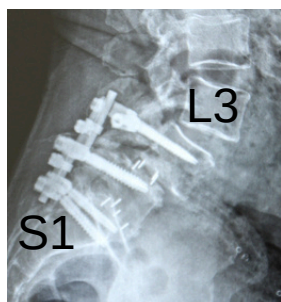


45mm Lordotic Rod

3D PRINTED PEDICLE SCREW

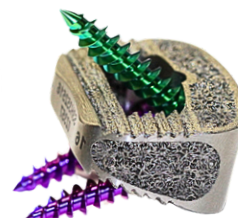
64 y/o L3-S1 Multi-level Stenosis

DOS 12/17/25



35x25x16mm

12°



6.0x45

6.0x45

6.0x40

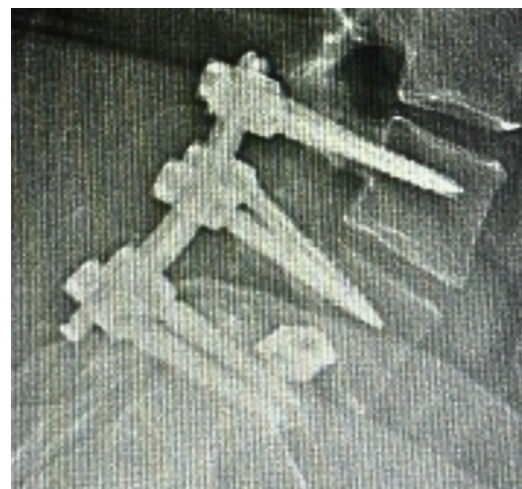
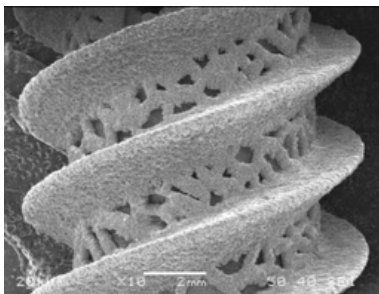
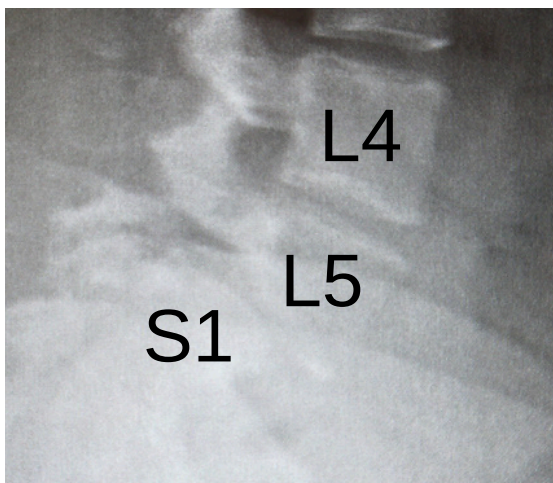
6.5x40



110mm Lordotic Rod

3D PRINTED PEDICLE SCREW

19 y/o Grade II Spondylolisthesis L5/S1, BMI 45%
DOS 12/24/25



28x9x10mm
6° cage



6.5mm x 45

6.0mm x 45

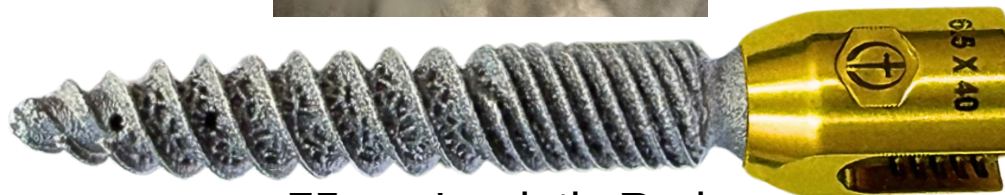
7.5mm x 40



6.0mm x 45

6.0mm x 45

7.5mm x 40



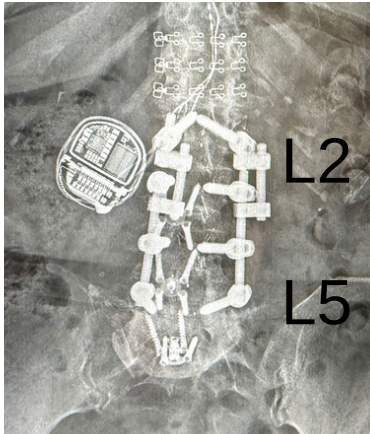
75mm Lordotic Rod



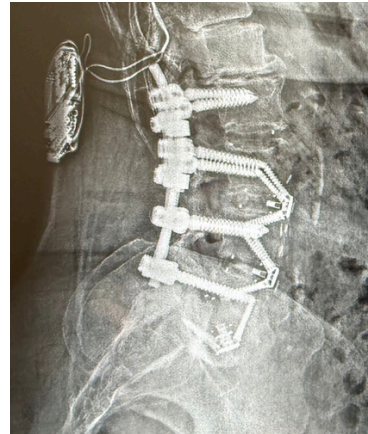
3D PRINTED PEDICLE SCREW

64 y/o L2-3 Post-Laminectomy Syndrome

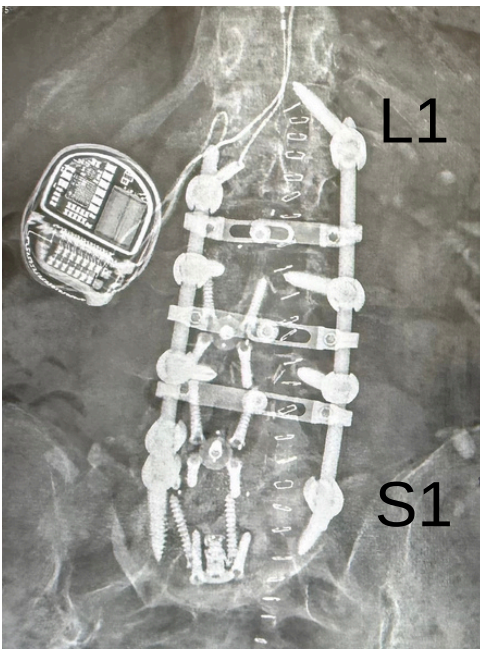
DOS 12/29/25



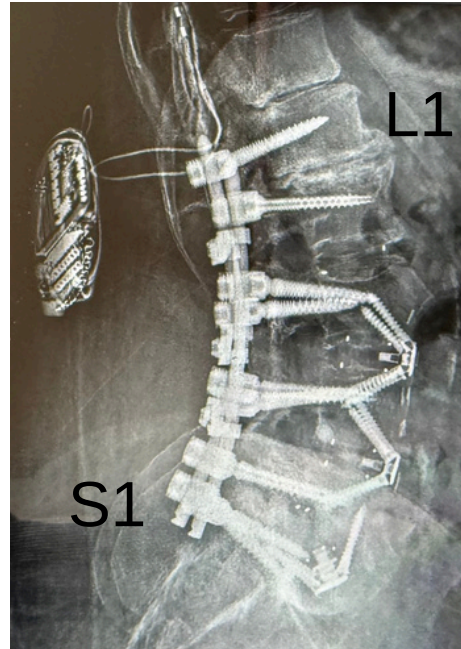
4.75mm x 40
6.5mm x 40
6.5mm x 45



6.0mm x 40
6.5mm x 40



6.5mm x 45
7.0mm x 35



6.5mm x 40
7.0mm x 35



130 & 150mm Lordotic Rod



3D PRINTED PEDICLE SCREW

65 y/o L3-4 Unilateral Symptoms

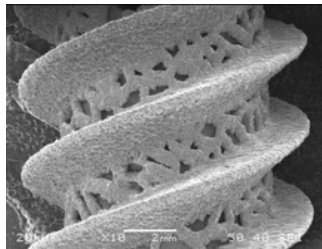
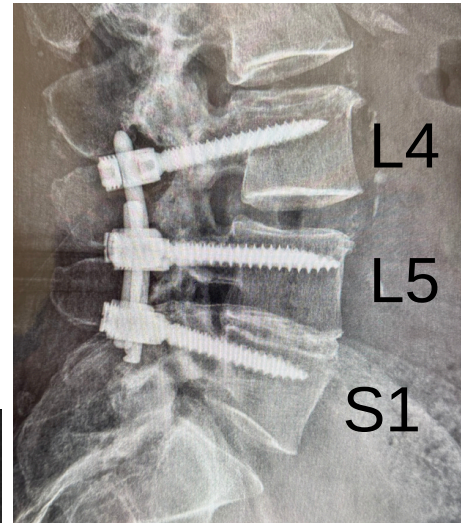
DOS 12/31/25



6.5mm x 50

7.0mm x 45

7.0mm x 45



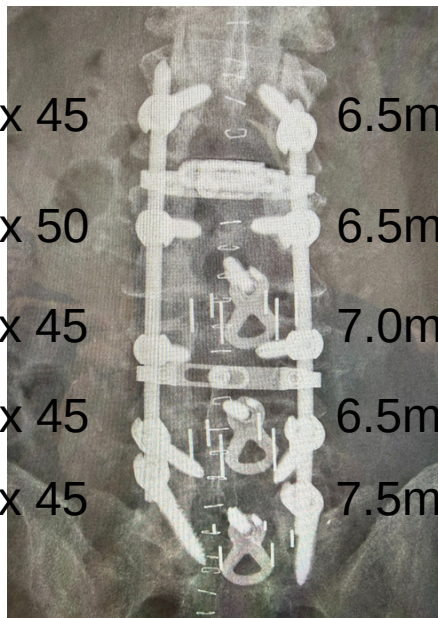
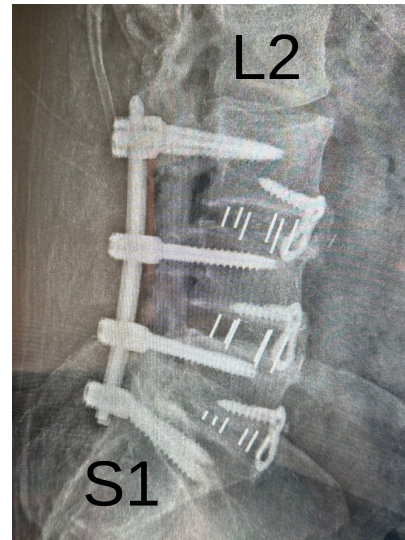
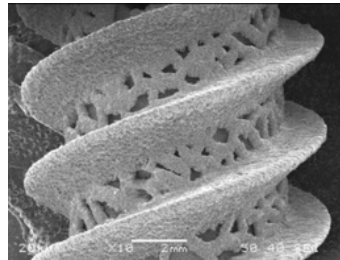
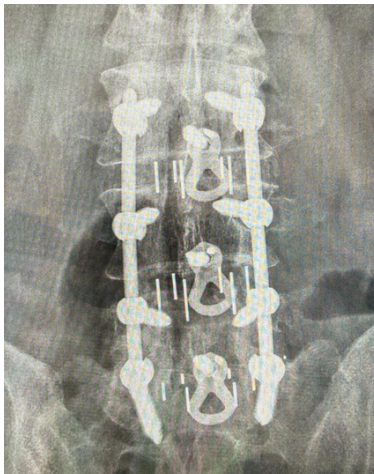
70mm Lordotic Rod



3D PRINTED PEDICLE SCREW

64 y/o L2-3 Stenosis and Revision

DOS 1/19/26



6.5mm x 45

6.5mm x 50

6.5mm x 50

6.5mm x 50

6.5mm x 45

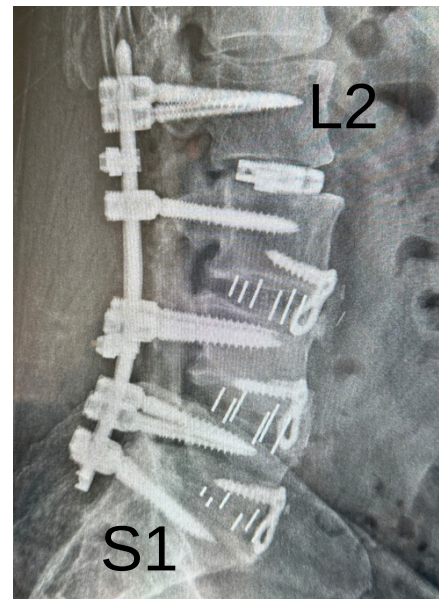
7.0mm x 45

7.0mm x 45

6.5mm x 45

7.5mm x 45

7.5mm x 45



Stacked

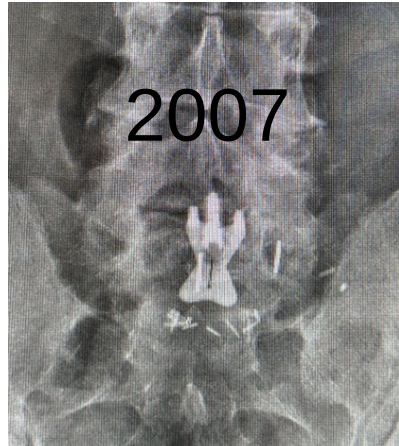


31x9x9mm
6° cage



150mm Lordotic Rod

52 y/o Post-Laminectomy Syndrome & Degenerative Disc



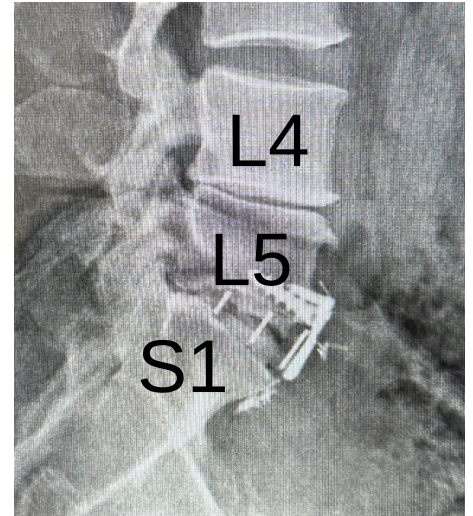
5.5mm x 25 Screws

L4/L5

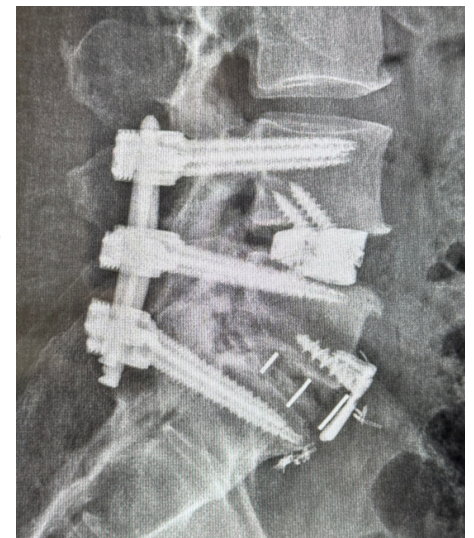
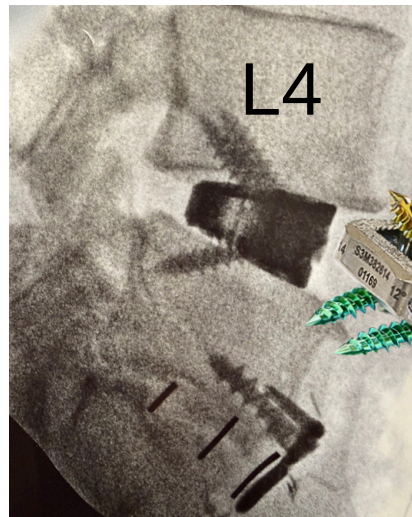
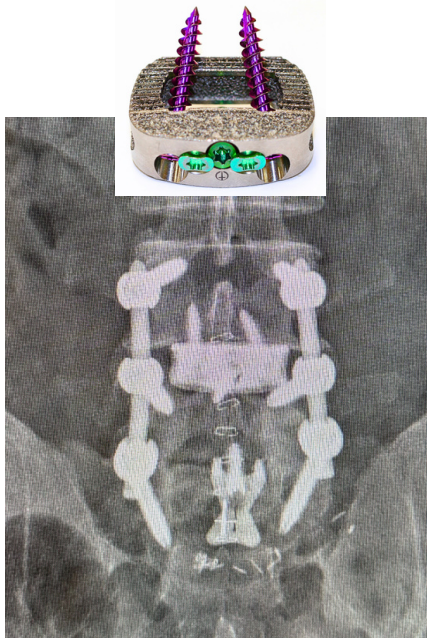
DOS 1/21/26



32x21x14mm cage
18°



6.0mm x 45 x 6

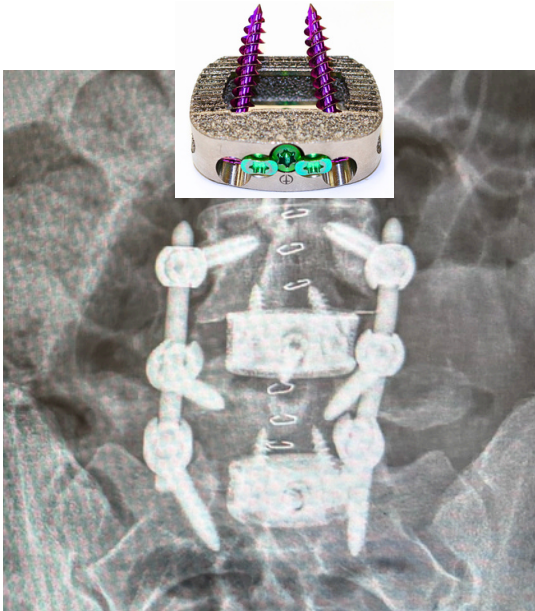
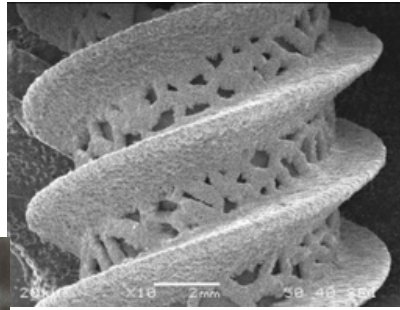
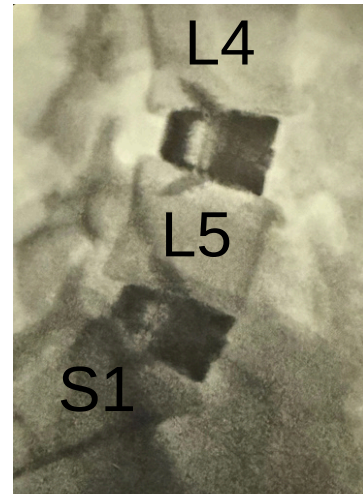
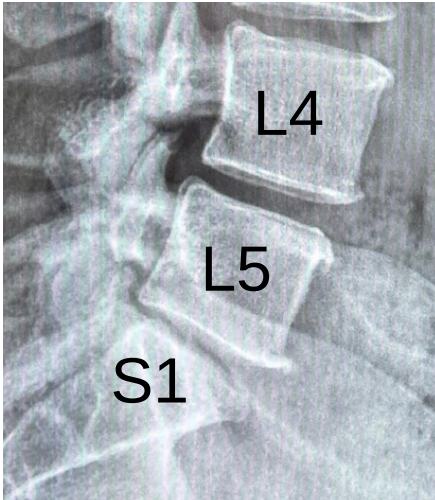


65 & 70mm Lordotic Rod

3D PRINTED PEDICLE SCREW

50 y/o L4-S1 Degenerative Disc

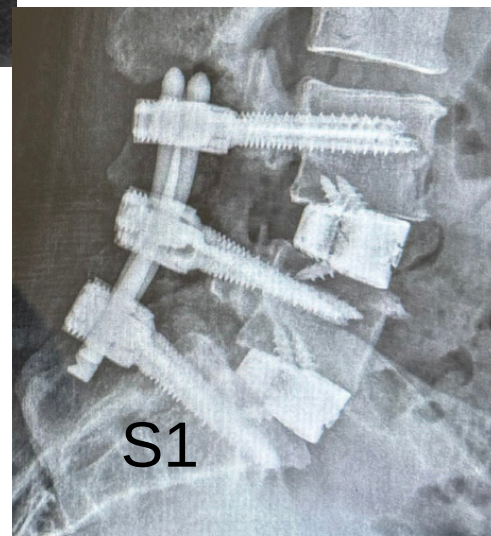
DOS 1/26/26



6.0mm x 45

6.0mm x 40

6.0mm x 40



70mm Lordotic Rod



EMINENT SPINE

Eminent Spine is dedicated to manufacturing biomechanically sound spinal implants and focusing on surface technology.



EMINENT
— SPINE —

2004 Ventura Dr. #250 Plano, TX 75093

Phone: 972.499.3593

www.EminentSpine.com