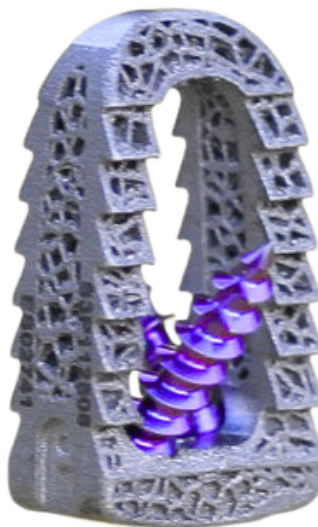




EMINENT
— SPINE —

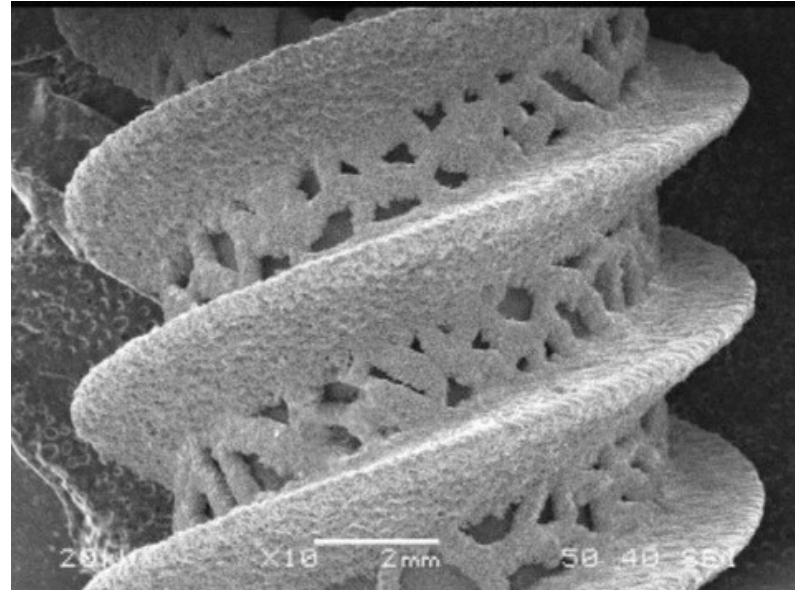
SI Screw System

Case Studies



EMINENT
— SPINE —

Cadaver Lab - Myrtle Beach, SC 11/2/2024
3D Printed Ti SI Screw Post-Extraction



Electron Microscope

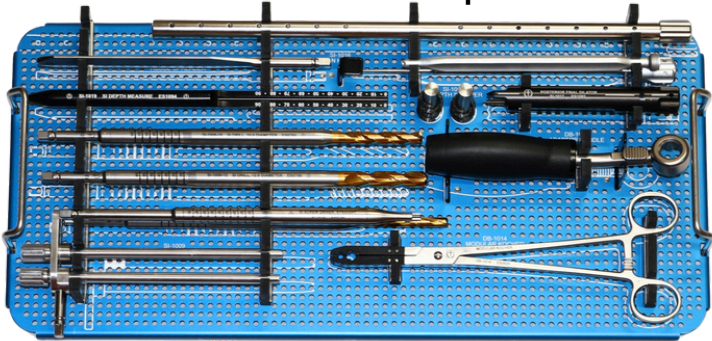


Collection Grooves filled with
self-harvested bone after
being extracted from the
cadaver

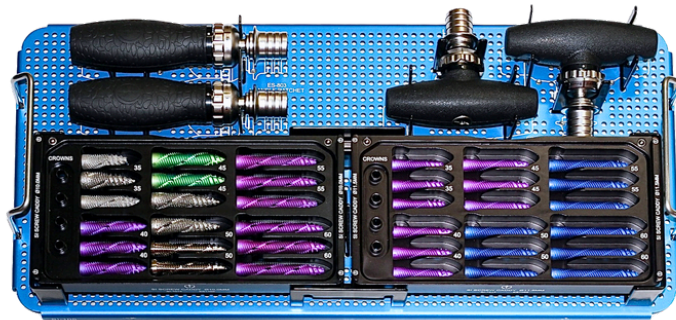
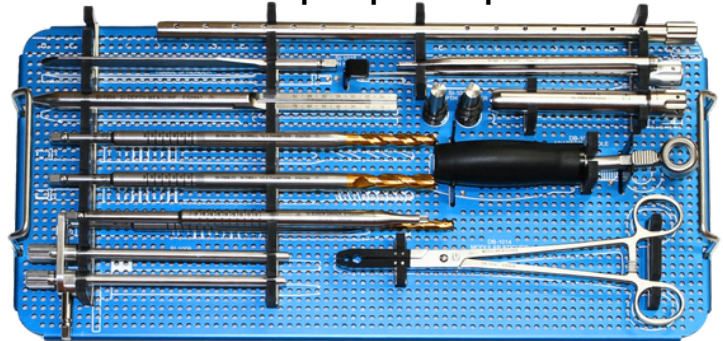




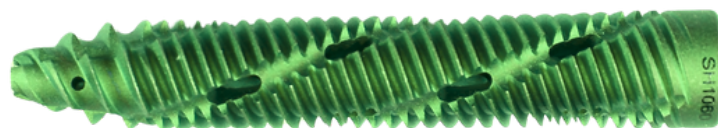
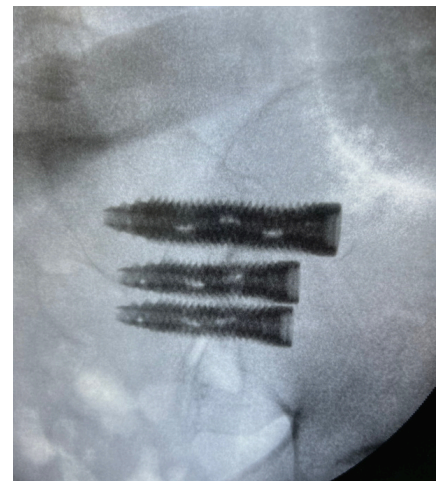
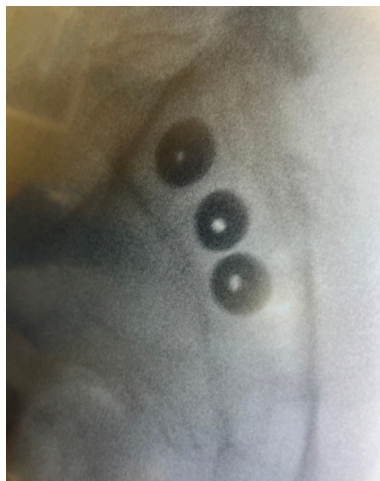
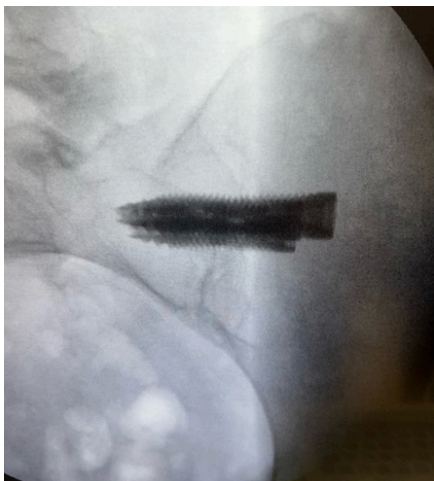
Radiolucent Option



Radiopaque Option

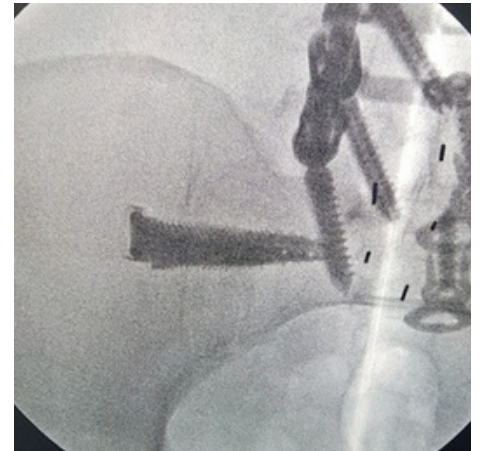
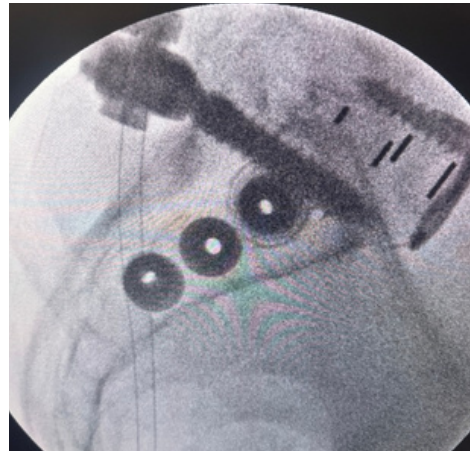
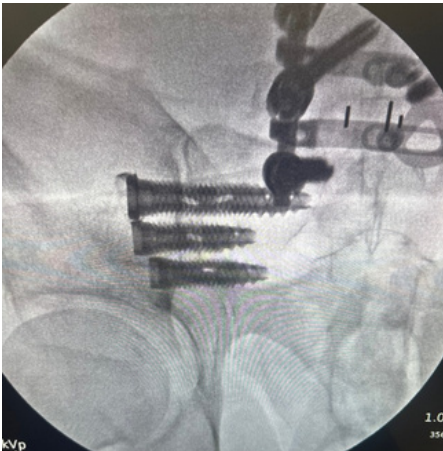
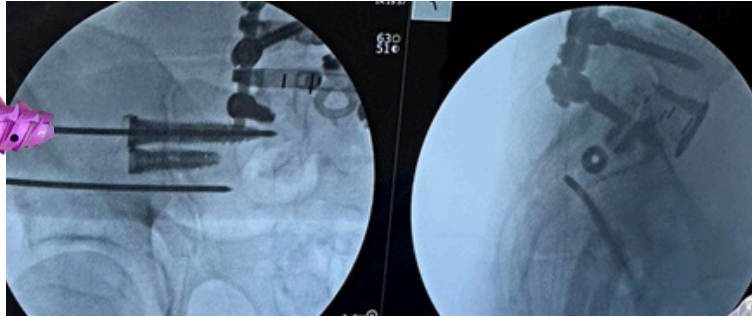


Post-Op X-Rays

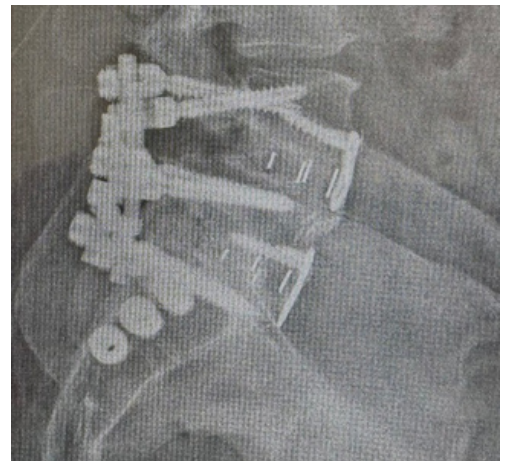




51 y/o Male with Bilateral SI Pain
DOS 11/13/24



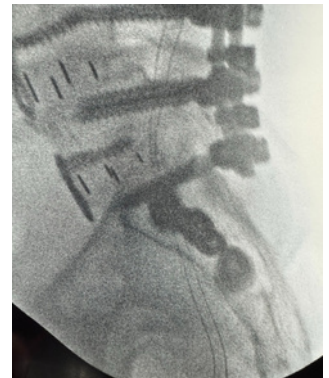
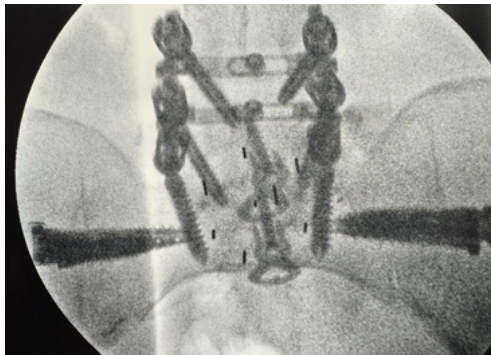
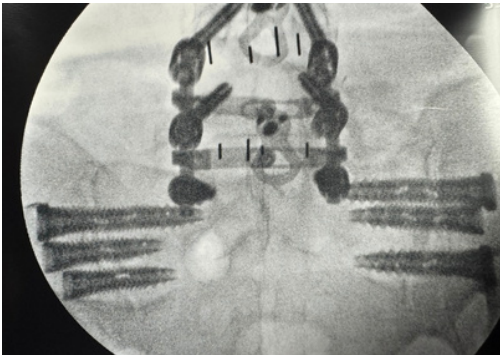
POST-OP





EMINENT
SPINE

51 y/o Male with Bilateral SI Pain - Staged
DOS 12/13/24



POST-OP



EMINENT
SPINE

Hybrid Approach



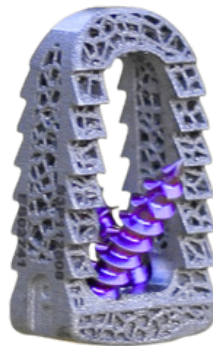
52 y/o Male with Right SI Pain
DOS 03/05/25

11 x 25 x 8mm

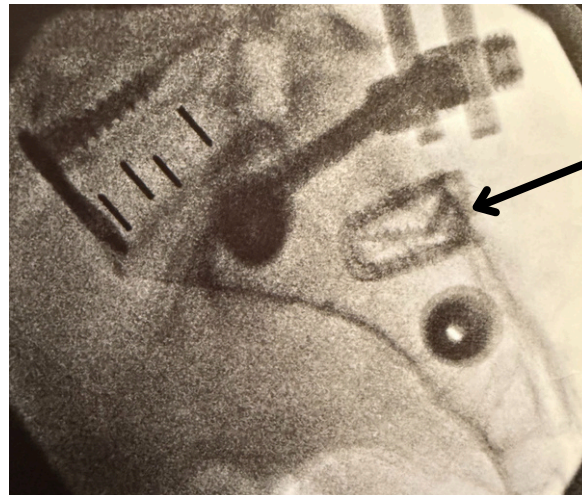


Screws
18mm x 3.5

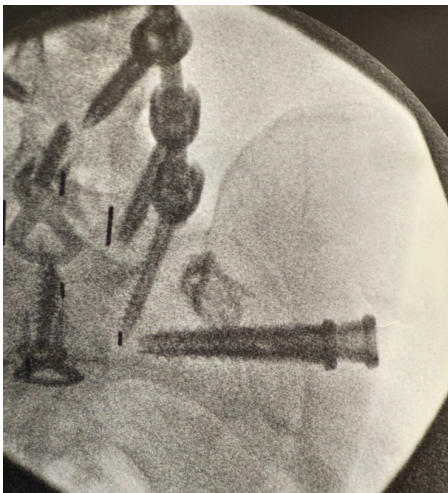
Inlet View



Posterior Cage



Outlet View

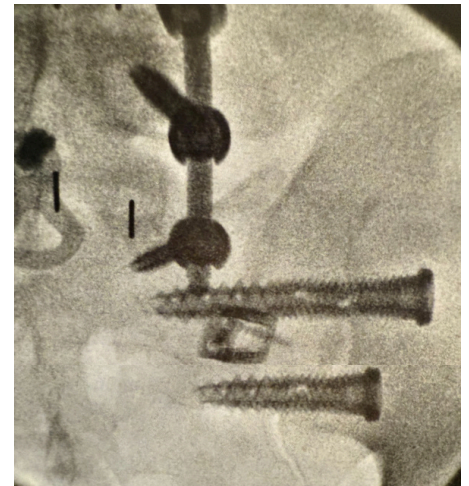


Headed



60 x 10mm

40 x 10mm

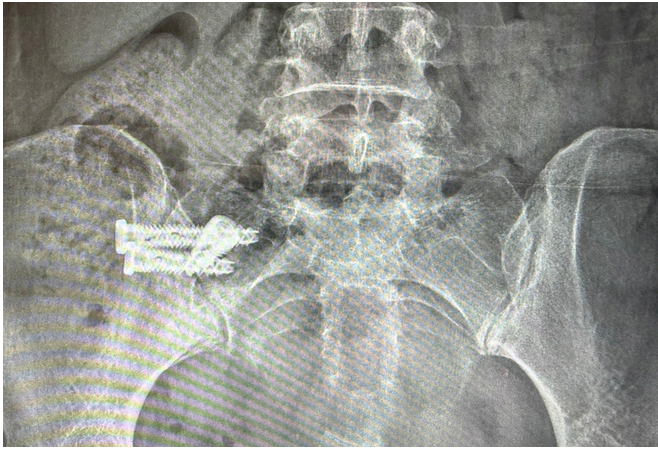


Hybrid Approach

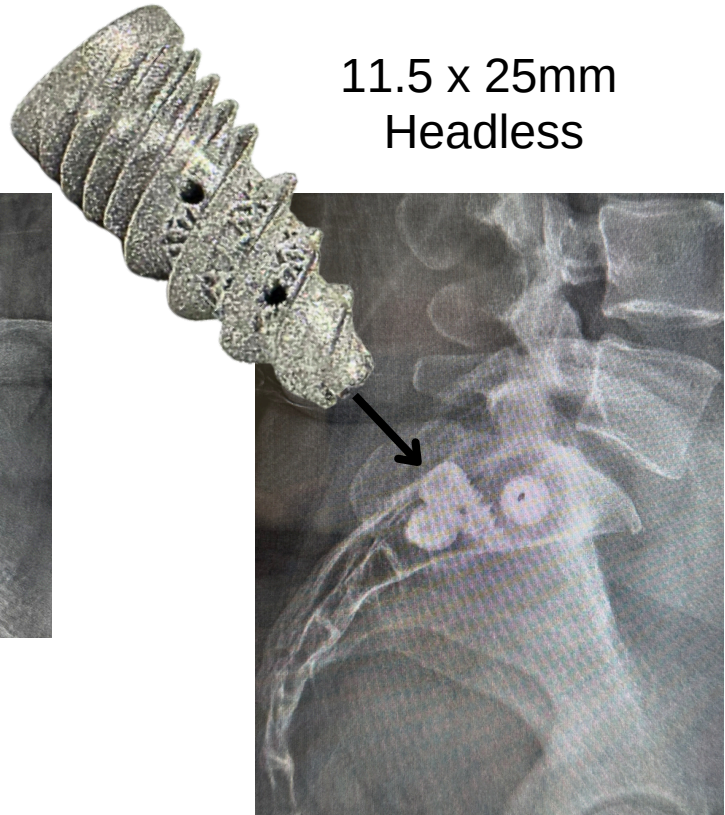


48 y/o Female with Right SI Pain
DOS 07/25/25

Headed



11.5 x 25mm
Headless



8.5 x 45mm Headed



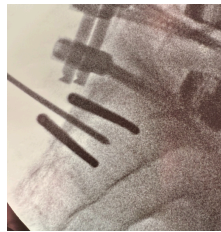
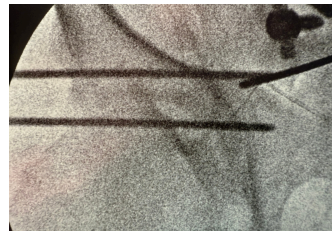
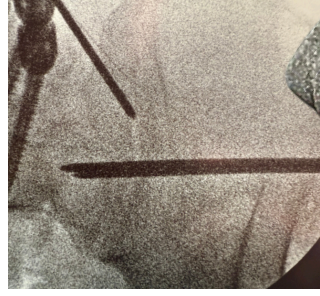
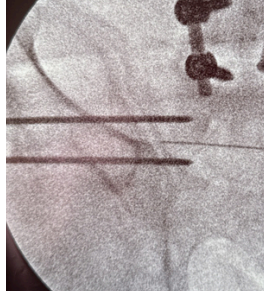
8.5 x 35mm Headed



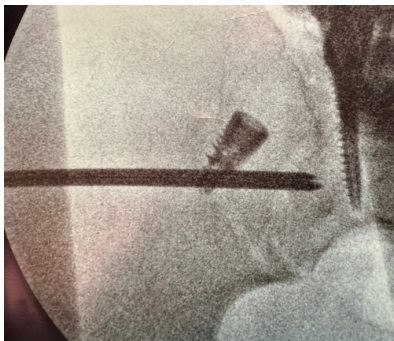
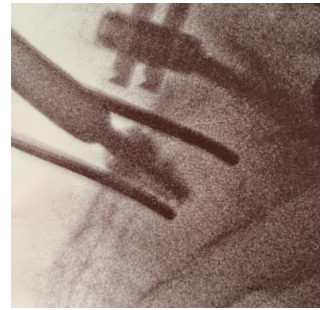
Hybrid Approach



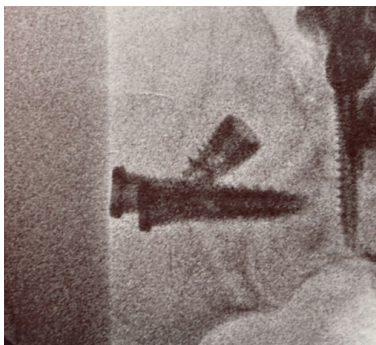
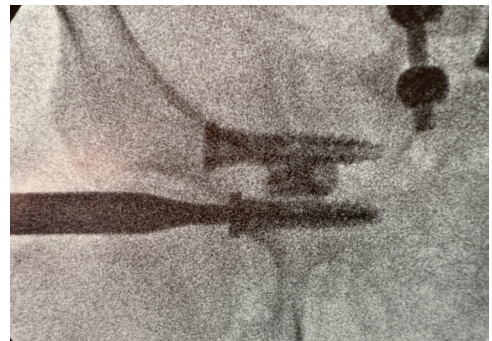
60 y/o Male with Left SI Pain
DOS 03/05/25



11.5 x 25mm



10 x 45mm
10 x 40mm



Hybrid Approach

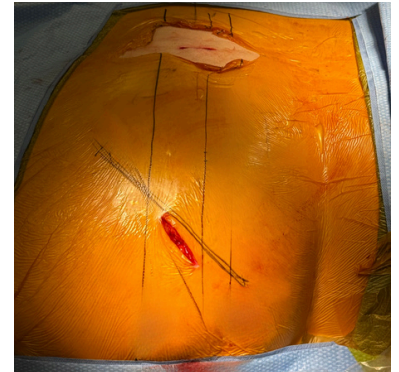


62 y/o Female with Right SI Pain
DOS 03/04/26



Lateral View

Posterior approach

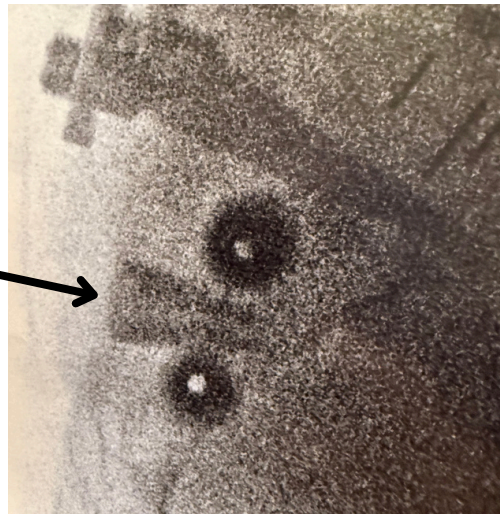


Lateral approach

Headless

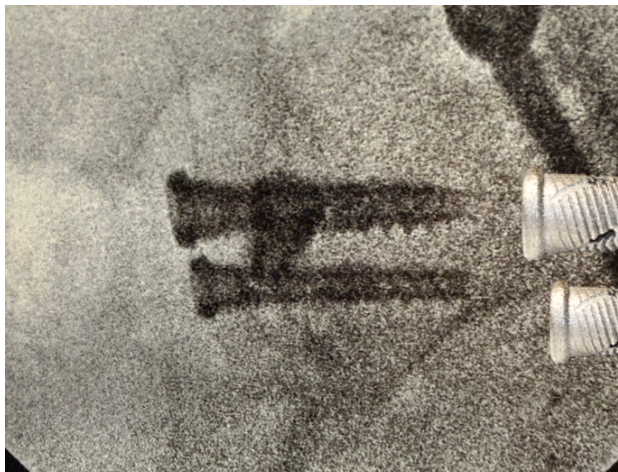


11.5 x 25mm



Inlet View

Outlet View

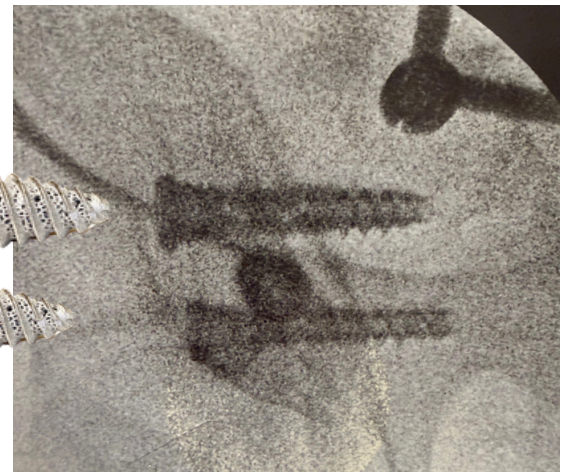


Headed

10 x 45mm



8.5 x 45mm

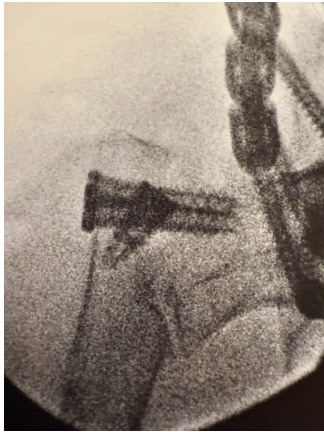
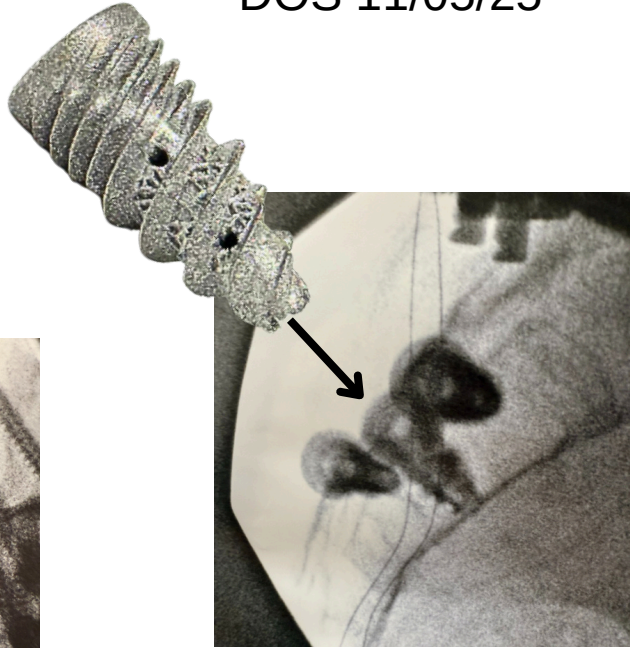


Hybrid Approach



62 y/o Female with Left SI Pain
DOS 11/05/25

Headless
11.5 x 25mm



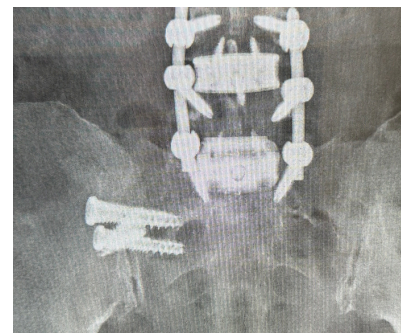
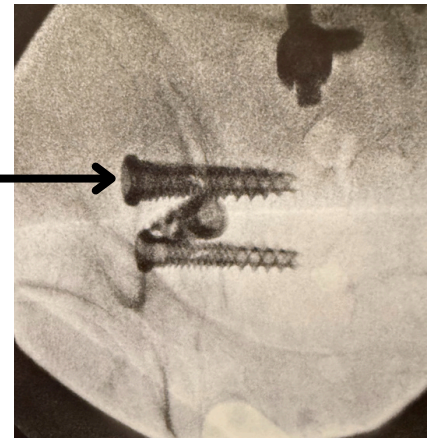
Headed



10 x 40mm



8.5 x 40mm

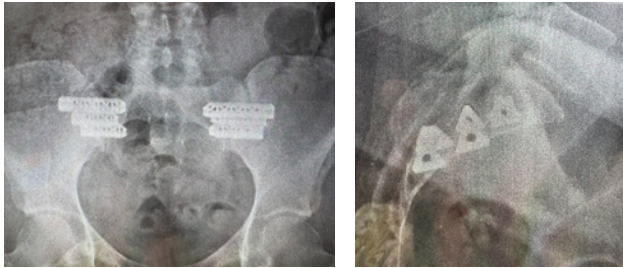


Hybrid Approach

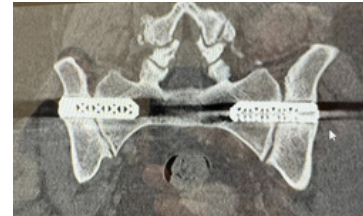


Revision

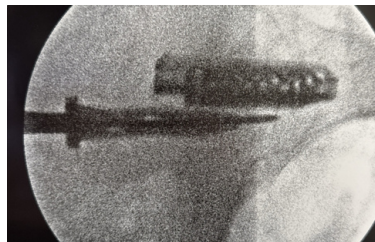
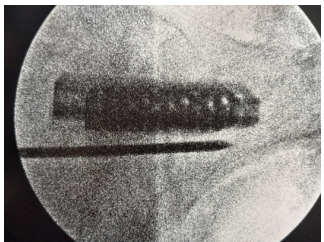
42 y/o Female with Bilateral SI Pain - Pseudoarthrosis
DOS 11/13/24



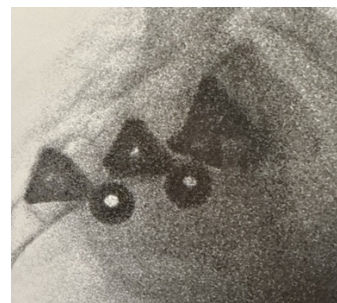
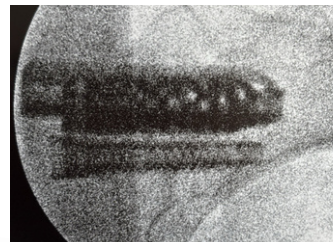
PRE-OP



CT Scan - Pseudoarthrosis



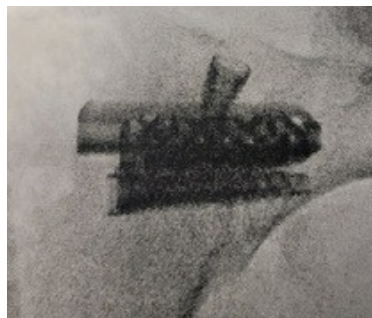
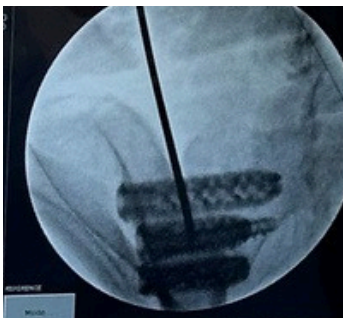
OR



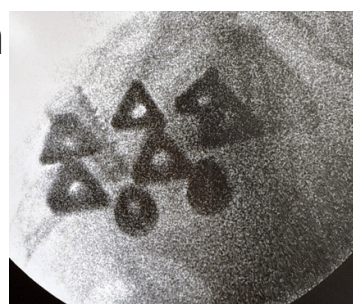
8.5 x 40mm
8.5 x 35mm



OR



8.5 x 20mm

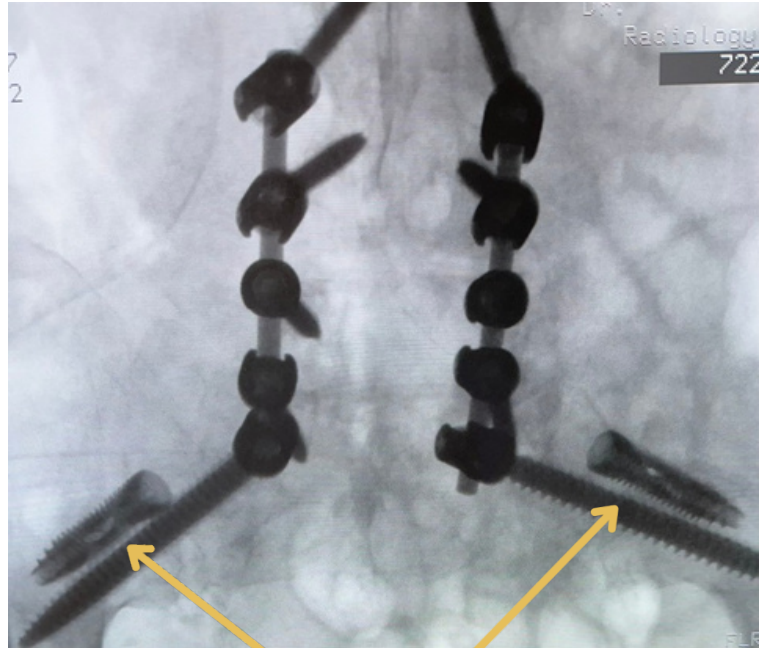
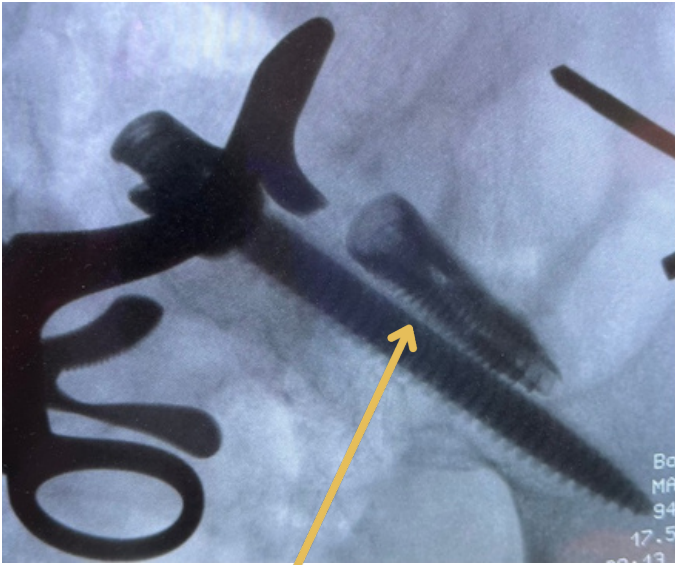


POST-OP





S2AI Approach Case Study



8.5 x 40mm
3D Printed Ti

